

4

3

2

1

NOTES:

1. INSTALLATION TYPE: BOTTOM SUPPORTED STRUCTURE APPLICATION
2. MIN DESIGN SERVICE TEMPERATURE: 6°F
3. WEIGHT SHOWN IS APPROXIMATE AND DOES NOT INCLUDE WELD, WIRE ROPE, HARDWARE AND MISCELLANEOUS PARTS.
4. CRANE TO INCLUDE OFFBOARD 400 GALLON 200 HP MOTOR
5. HOSES AND ELECTRICAL NOT SHOWN FOR CLARITY

D

D

C

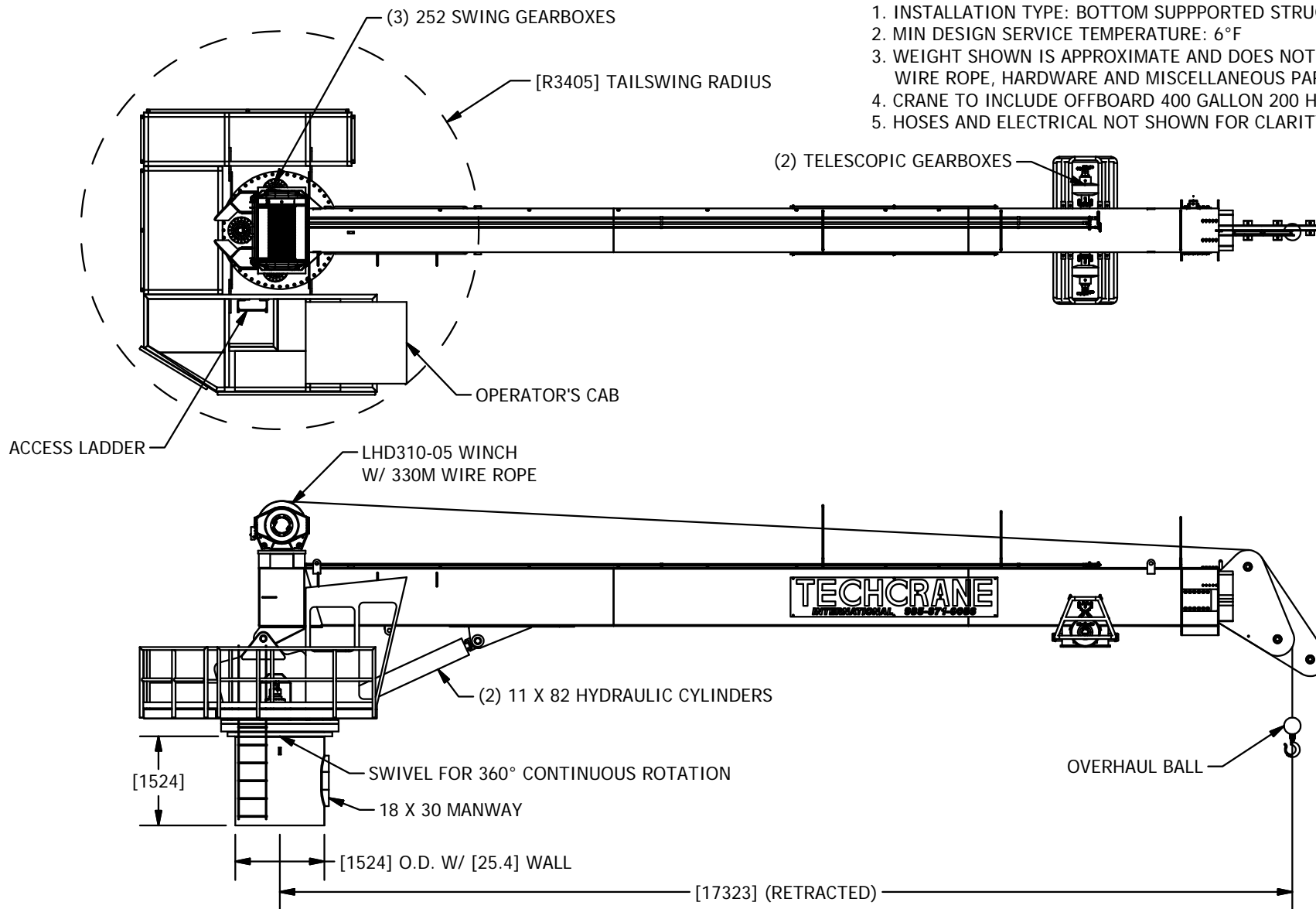
C

B

B

A

A



INFORMATION CONTAINED HEREON IS
CONFIDENTIAL AND TRADE SECRET
DO NOT DISCLOSE, USE OR REPRODUCE
WITHOUT PRIOR WRITTEN APPROVAL
FROM TECHCRANE INTERNATIONAL LLC.

UNLESS OTHERWISE SPECIFIED
ALL DIMENSIONS ARE IN INCHES
[] INDICATES MILLIMETERS

TOLERANCES

FRACTIONAL DIMENSIONS $\pm \frac{1}{16}$ 0
SURFACE FINISHES 125V

DESIGNED BY:

F. SHAD

DRAWN BY:

lbaylis

WEIGHT:

64047 lbmass

APPROVED BY:

SEE APPROVAL STAMP

FILE NAME:

C:\WORKSPACE\PROJECTS\T80-56-100\T80-56-100 GENERAL ARRANGENT JOB.dwg

MATERIAL NOTES:

1. BURN PER DIMENSIONS SHOWN.
2. PLATE FLATNESS AFTER BURNING TO BE WITHIN ASTM SPECIFICATIONS.
3. REFER TO API SPEC 2C LATEST EDITION.
4. WHERE APPLICABLE - ROLL FORM PER DIMENSIONS SHOWN.
5. WHERE APPLICABLE - TACK WELD AS REQUIRED TO SECURE ROLLED CAN.

DESIGN STATE:

WorkInProgress

MATERIAL:

**TECHCRANE INTERNATIONAL, LLC.**

17639 HARD HAT DRIVE COVINGTON, LA. 70435 U.S.A.
PHONE (985) 871-0056 FAX (985) 871-0065

**T80-56-100 GENERAL ARRANGENT JOB
#12903**

DATE:

2/12/2016

REVISION NO.:

3.0

CO NO.:

SHEET 1 OF 4

PART/DWG. NO.:

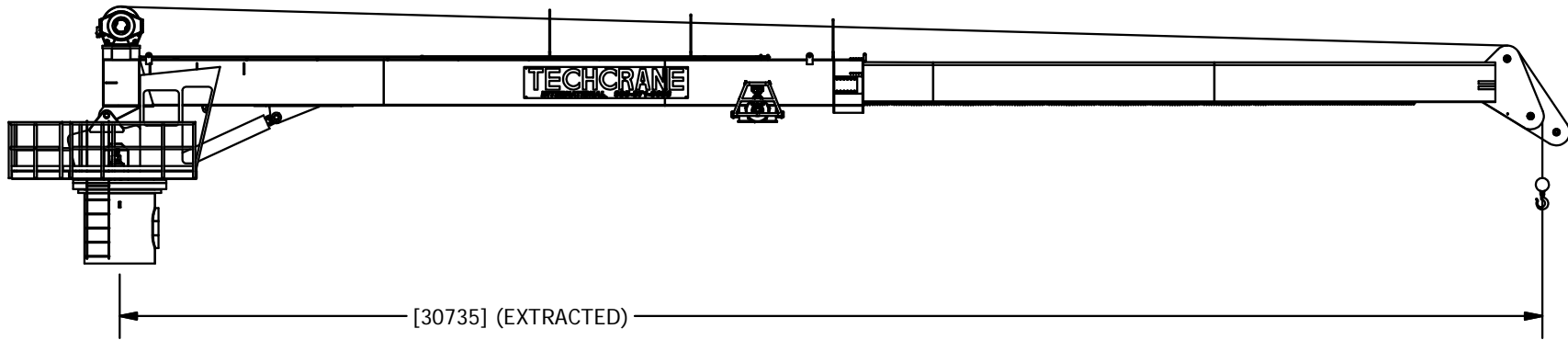
T0080-56-100

4

3

2

1



PART/DWG. NO.:

T0080-56-100

INFORMATION CONTAINED HEREON IS
CONFIDENTIAL AND TRADE SECRET
DO NOT DISCLOSE, USE OR REPRODUCE
WITHOUT PRIOR WRITTEN APPROVAL
FROM TECHCRANE INTERNATIONAL LLC.

UNLESS OTHERWISE SPECIFIED
ALL DIMENSIONS ARE IN INCHES
[] INDICATES MILLIMETERS

TOLERANCES

FRACTIONAL DIMENSIONS $\pm \frac{1}{16}$ / -0
SURFACE FINISHES 125V

DESIGNED BY:

F. SHAD

DRAWN BY:

lbaylis

WEIGHT:

64047 lbmass

APPROVED BY:

SEE APPROVAL STAMP

FILE NAME:

C:\WORKSPACE\PROJECTS\T0080-56-100\T0080-56-100 GENERAL ARRANGENT JOB.dwg

MATERIAL NOTES:

1. BURN PER DIMENSIONS SHOWN.
2. PLATE FLATNESS AFTER BURNING TO BE WITHIN ASTM SPECIFICATIONS.
3. REFER TO API SPEC 2C LATEST EDITION.
4. WHERE APPLICABLE - ROLL FORM PER DIMENSIONS SHOWN.
5. WHERE APPLICABLE - TACK WELD AS REQUIRED TO SECURE ROLLED CAN.

DESIGN STATE:

WorkInProgress

MATERIAL:



TECHCRANE INTERNATIONAL, LLC.

17639 HARD HAT DRIVE COVINGTON, LA. 70435 U.S.A.
PHONE (985) 871-0056 FAX (985) 871-0065

**T80-56-100 GENERAL ARRANGENT JOB
#12903**

DATE:

2/12/2016

REVISION NO.:

3.0

CO NO.:

SHEET 2 OF 4

4

3

2

1

D

D

C

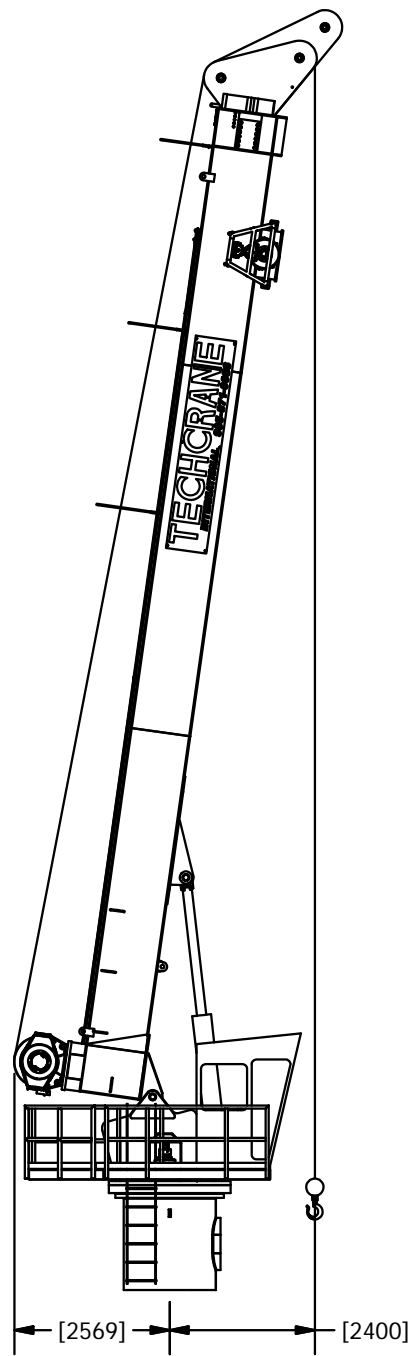
C

B


B

A

A



BOOM UP RETRACTED

INFORMATION CONTAINED HEREON IS CONFIDENTIAL AND TRADE SECRET DO NOT DISCLOSE, USE OR REPRODUCE WITHOUT PRIOR WRITTEN APPROVAL FROM TECHCRANE INTERNATIONAL LLC.	DESIGNED BY: F. SHAD	MATERIAL NOTES: 1. BURN PER DIMENSIONS SHOWN. 2. PLATE FLATNESS AFTER BURNING TO BE WITHIN ASTM SPECIFICATIONS. 3. REFER TO API SPEC 2C LATEST EDITION 4. WHERE APPLICABLE - ROLL FORM PER DIMENSIONS SHOWN. 5. WHERE APPLICABLE - TACK WELD AS REQUIRED TO SECURE ROLLED CAN. DESIGN STATE: WorkInProgress	 TECHCRANE INTERNATIONAL, LLC. 17639 HARD HAT DRIVE COVINGTON, LA. 70435 U.S.A. PHONE (985) 871-0056 FAX (985) 871-0065		
	DRAWN BY: lbaylis				
	WEIGHT: 64047 lbmass				
	APPROVED BY: SEE APPROVAL STAMP				
	FILE NAME: C:\WORKSPACE\PROJECTS\T80-56-100\T80-56-100-114-001.dwg				
UNLESS OTHERWISE SPECIFIED ALL DIMENSIONS ARE IN INCHES [] INDICATES MILLIMETERS <u>TOLERANCES</u> FRACTIONAL DIMENSIONS $\pm \frac{1}{16}$ / -0 SURFACE FINISHES 125V	T80-56-100 GENERAL ARRANGENT JOB #12903				
		DATE: 2/12/2016	REVISION NO.: 3.0	CO NO.:	
SHEET 3 OF 4					

PART/DWG. NO.:
T0080-56-100

4

3

2

1

4

3

2

1

D

D

C

C

B

B

A

A

BOOM UP EXTRACTED

[2569] [4272]

PART/DWG. NO.:

T0080-56-100

INFORMATION CONTAINED HEREON IS
CONFIDENTIAL AND TRADE SECRET
DO NOT DISCLOSE, USE OR REPRODUCE
WITHOUT PRIOR WRITTEN APPROVAL
FROM TECHCRANE INTERNATIONAL LLC.

UNLESS OTHERWISE SPECIFIED
ALL DIMENSIONS ARE IN INCHES
[] INDICATES MILLIMETERS

TOLERANCES

FRACTIONAL DIMENSIONS $+\frac{1}{16}/-0$
SURFACE FINISHES 125V

DESIGNED BY:

F. SHAD

DRAWN BY:

lbaylis

WEIGHT:

64047 lbmass

APPROVED BY:

SEE APPROVAL STAMP

FILE NAME:

C:\WORKSPACE\PROJECTS\T0080-56-100\T0080-56-100-GENERAL ARRANGENT JOB.dwg

MATERIAL NOTES:

1. BURN PER DIMENSIONS SHOWN.
2. PLATE FLATNESS AFTER BURNING TO BE
WITHIN ASTM SPECIFICATIONS.
3. REFER TO API SPEC 2C LATEST EDITION.
4. WHERE APPLICABLE - ROLL FORM PER
DIMENSIONS SHOWN.
5. WHERE APPLICABLE - TACK WELD AS
REQUIRED TO SECURE ROLLED CAN.

DESIGN STATE:

WorkInProgress

MATERIAL:



TECHCRANE INTERNATIONAL, LLC.

17639 HARD HAT DRIVE COVINGTON, LA. 70435 U.S.A.
PHONE (985) 871-0056 FAX (985) 871-0065

T80-56-100 GENERAL ARRANGENT JOB
#12903

DATE:

2/12/2016

REVISION NO.:

3.0

CO NO.:

SHEET 4 OF 4