

4

3

2

1

(2) MODEL 130  
SWING GEARBOXES

WALK AROUND CONTROLS

Ø120 3/4  
TAIL SWING

WINCH ACCESS PLATFORM

LADDER

540 1/4 OVERALL (RETRACTED)

TWG 1241 MAIN WINCH  
W/ 350 FT. 9/16" WIRE ROPE

182 3/8

7 X 77 CYLINDERS (2)

18" MANWAY

Ø42 OD

100 GALLON 50 HP HPU  
W/ STARTER PANEL

107 13/16

TWG 859 AUX. WINCH  
WITH 1/2" WIRE ROPEOVERHAUL  
BALL

70 5/16

TELESCOPIC  
GEARBOXLOAD BLOCK  
W/ 2 PART LINE

73 7/8 PEDESTAL

374 3/8

480 RETRACTED

840 EXTENDED

82 11/16

142 1/4

54 5/16

7

INFORMATION CONTAINED HEREON IS  
CONFIDENTIAL AND TRADE SECRET  
DO NOT DISCLOSE, USE OR REPRODUCE  
WITHOUT PRIOR WRITTEN APPROVAL  
FROM TECHCRANE INTERNATIONAL LLC.

UNLESS OTHERWISE SPECIFIED  
ALL DIMENSIONS ARE IN INCHES  
[ ] INDICATES MILLIMETERS

## TOLLERANCES

FRACTIONAL DIMENSIONS +1/16/-0  
SURFACE FINISHES 125V

DESIGNED BY:

F. SHAD

DRAWN BY:

N. Polasa

WEIGHT:

N/A

APPROVED BY:

FILE NAME:

P:\Design\Bids\Series\CRANES\PRODUCTION DRAWINGS\T30-40-70-IMTT.dwg

MATERIAL NOTES:

1. BURN PER DIMENSIONS SHOWN.  
2. PLATE FLATNESS AFTER BURNING TO BE  
WITHIN ASTM SPECIFICATIONS.  
3. REFER TO API SPEC 2C LATEST EDITION.  
4. WHERE APPLICABLE - ROLL FORM PER  
DIMENSIONS SHOWN.  
5. WHERE APPLICABLE - TACK WELD AS  
REQUIRED TO SECURE ROLLED CAN.

DESIGN STATE:

WorkInProgress

MATERIAL:



TECHCRANE INTERNATIONAL, LLC.

17639 HARD HAT DRIVE COVINGTON, LA. 70435 U.S.A.  
PHONE (985) 871-0056 FAX (985) 871-0065

IMTT  
T30-40-70 GENERAL ARRANGEMENT  
(HORIZONTAL)

DATE:

7/8/2014

REVISION NO.:

2.4

SHEET 1 OF 2

PART/DWG. NO.:

PRESENTATION

4

3

2

1

4

3

2

1

D

D

C

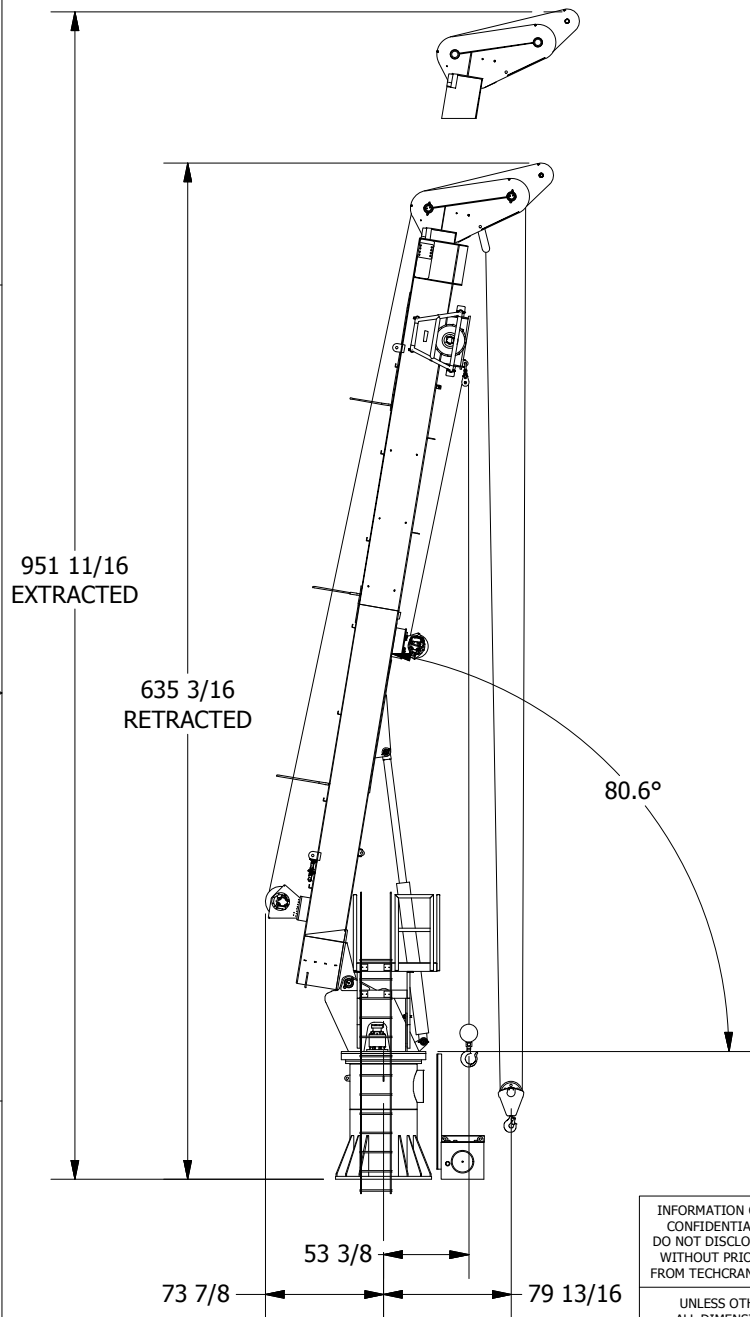
C

B

B

A

A



### PEDESTAL NOTES

\*\* TECHCRANE PROPOSED HEIGHT OF THE PEDESTAL WAS 90" DUE TO THE PRESENCE OF A PIPE STICKING OUT WHICH MIGHT HIT THE BOOM, BUT AS PER CUSTOMER REQUEST THE HEIGHT OF THE PEDESTAL IS REDUCED TO 70", CUSTOMER IS RESPONSIBLE FOR THE SAFE OPERATION OF THE CRANE. \*\*

CUSTOMER APPROVAL: \_\_\_\_\_

DATE: \_\_\_\_\_

PART/DWG. NO.:

**PRESENTATION**

INFORMATION CONTAINED HEREON IS  
CONFIDENTIAL AND TRADE SECRET  
DO NOT DISCLOSE, USE OR REPRODUCE  
WITHOUT PRIOR WRITTEN APPROVAL  
FROM TECHCRANE INTERNATIONAL LLC.

UNLESS OTHERWISE SPECIFIED  
ALL DIMENSIONS ARE IN INCHES  
[] INDICATES MILLIMETERS

#### TOLLERANCES

FRACTIONAL DIMENSIONS  $\pm \frac{1}{16}$  / -0  
SURFACE FINISHES 125V

DESIGNED BY:

F. SHAD

DRAWN BY:

N. Polasa

WEIGHT:

N/A

APPROVED BY:

FILE NAME:

\\Design\_Resources\01 - SERIES CRANES - PRODUCTION DRAWINGS - MODEL GA/T30T34-40-70.dwg

MATERIAL NOTES:

1. BURN PER DIMENSIONS SHOWN.
2. PLATE FLATNESS AFTER BURNING TO BE WITHIN ASTM SPECIFICATIONS.
3. REFER TO API SPEC 2C LATEST EDITION.
4. WHERE APPLICABLE - ROLL FORM PER DIMENSIONS SHOWN.
5. WHERE APPLICABLE - TACK WELD AS REQUIRED TO SECURE ROLLED CAN.

DESIGN STATE:

WorkInProgress

MATERIAL:



**TECHCRANE INTERNATIONAL, LLC.**

17639 HARD HAT DRIVE COVINGTON, LA. 70435 U.S.A.  
PHONE (985) 871-0056 FAX (985) 871-0065

**IMTT**  
**T30-40-70 GENERAL ARRANGEMENT**  
**(80.6 DEGREES)**

DATE:

7/8/2014

REVISION NO.:

2.4

SHEET 2 OF 2

4

3

2

1

