

4

3

2

1

(3) 252 SWING  
GEARBOXES

300 HP DIESEL ENGINE

[R3645] TAILSWING RADIUS

ANTI-TWO BLOCKING MECHANISM

(2) TELESCOPIC GEARBOXES

LARGE OPERATOR'S CAB

500 GALLON  
BI-FLUID TANK

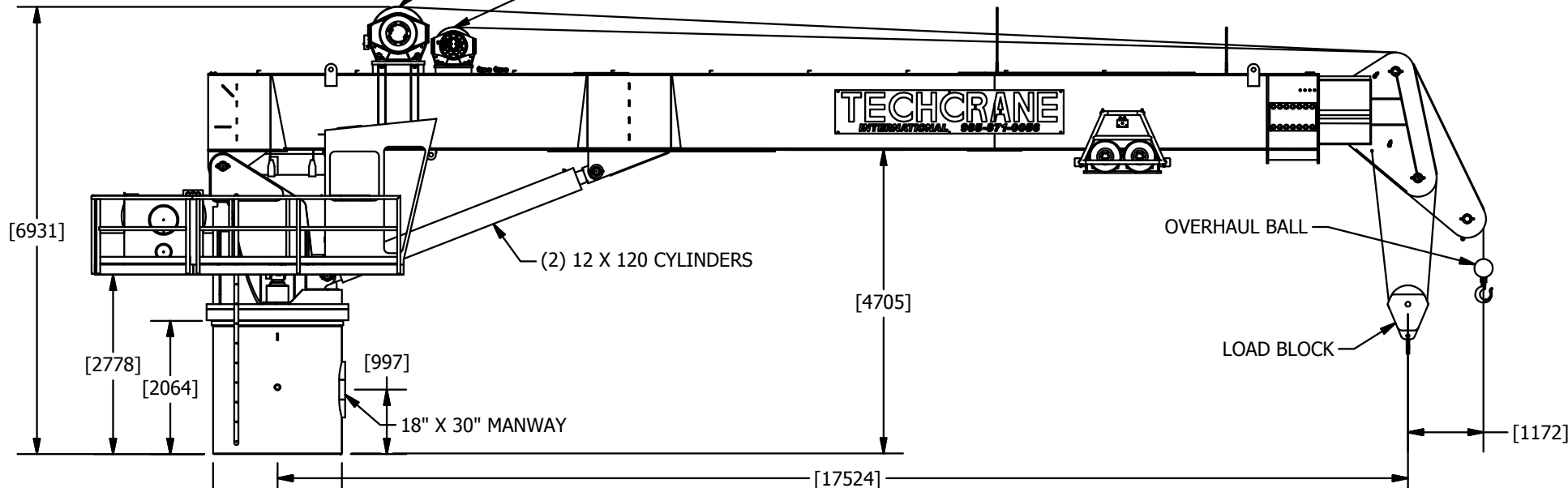
ACCESS LADDER

MAIN WINCH

AUX. WINCH

## NOTES:

1. THE INFORMATION PROVIDED IN THIS DOCUMENT IS INTENDED FOR INFORMATIONAL PURPOSES ONLY AND IS SUBJECT TO CHANGE WITHOUT NOTICE.
2. WEIGHT SHOWN IS APPROXIMATE AND DOES NOT INCLUDE WELD, WIRE ROPE, HARDWARE AND MISCELLANEOUS PARTS.

[1994] O.D.  
WITH [31.7] WALL

INFORMATION CONTAINED HEREON IS  
CONFIDENTIAL AND TRADE SECRET  
DO NOT DISCLOSE, USE OR REPRODUCE  
WITHOUT PRIOR WRITTEN APPROVAL  
FROM TECHCRANE INTERNATIONAL LLC.

UNLESS OTHERWISE SPECIFIED  
ALL DIMENSIONS ARE IN INCHES  
[ ] INDICATES MILLIMETERS  
**TOLERANCES**

FRACTIONAL DIMENSIONS  $+1/32/-0$   
SURFACE FINISHES 125 $\sqrt{}$

FILE NAME:  
C:\Work\Design\1 PARTS\9999\GA\T120-58-100 GENERAL ARRANGEMENT.dwg

DESIGNED BY:  
F. SHADDRAWN BY:  
lbaylisWEIGHT:  
122016 lbmassAPPROVED BY:  
SEE APPROVAL STAMPDESIGN STATE:  
WorkInProgress

MATERIAL NOTES:  
1. ALL NDE TO BE IN ACCORDANCE AND  
CALIBRATED TO AWS D1.1.  
2. BURN PER DIMENSIONS SHOWN.  
3. PLATE FLATNESS AFTER BURNING TO BE  
WITHIN ASTM SPECIFICATIONS.  
4. REFER TO API SPEC 2C LATEST EDITION.  
5. WHERE APPLICABLE - ROLL FORM PER  
DIMENSIONS SHOWN.  
6. WHERE APPLICABLE - TACK WELD AS  
REQUIRED TO SECURE ROLLED CAN.

MATERIAL:



TECHCRANE INTERNATIONAL, LLC.

17639 HARD HAT DRIVE COVINGTON, LA. 70435 U.S.A.  
PHONE (985) 871-0056 FAX (985) 871-0065

T120-58-100 GENERAL ARRANGEMENT

DATE:

9/28/2016

REVISION NO.:

3.0

CO NO.:

SHEET 1 OF 4

PART/DWG. NO.:

T0120-58-100-GA

4

3

2

1

4

3

2

1

D

D

C

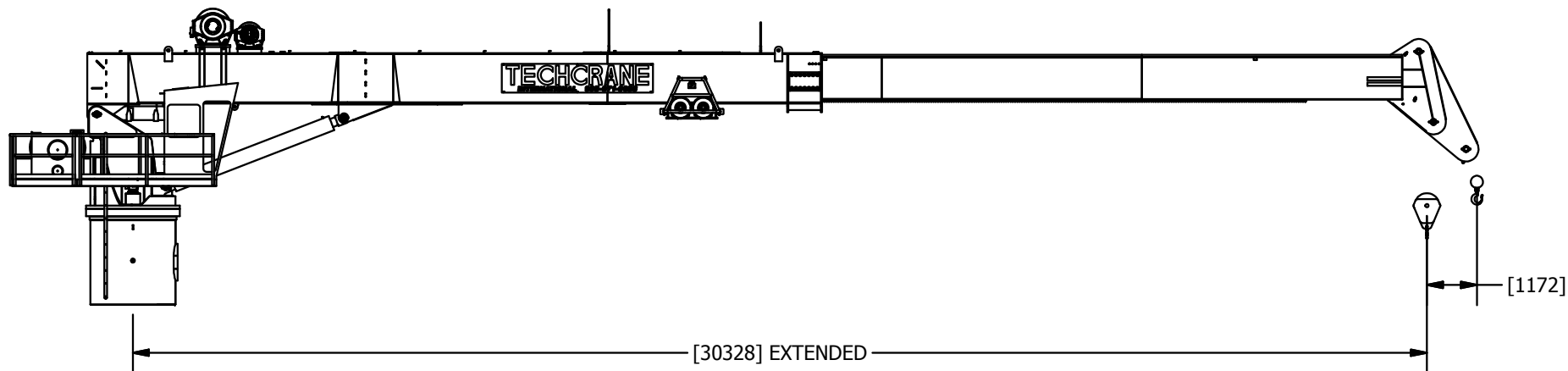
C

B

B

A

A



PART/DWG. NO.:

T0120-58-100-GA

INFORMATION CONTAINED HEREON IS  
CONFIDENTIAL AND TRADE SECRET  
DO NOT DISCLOSE, USE OR REPRODUCE  
WITHOUT PRIOR WRITTEN APPROVAL  
FROM TECHCRANE INTERNATIONAL, LLC.

UNLESS OTHERWISE SPECIFIED  
ALL DIMENSIONS ARE IN INCHES  
[] INDICATES MILLIMETERS  
**TOLERANCES**

FRACTIONAL DIMENSIONS  $+\frac{1}{32}/-0$   
SURFACE FINISHES 125 $\sqrt{}$

FILE NAME:  
C:\Work\DESIGNS\1 PARTS\9999\GA\T120-58-100 GENERAL ARRANGEMENT.dwg

DESIGNED BY:

F. SHAD

DRAWN BY:

lbaylis

WEIGHT:

122016 lbmass

APPROVED BY:

SEE APPROVAL STAMP

DESIGN STATE:

WorkInProgress

MATERIAL NOTES:

1. ALL NDE TO BE IN ACCORDANCE AND  
CALIBRATED TO AWS D1.1.  
2. BURN PER DIMENSIONS SHOWN.  
3. PLATE FLATNESS AFTER BURNING TO BE  
WITHIN ASTM SPECIFICATIONS.  
4. REFER TO API SPEC 2C LATEST EDITION.  
5. WHERE APPLICABLE - ROLL FORM PER  
DIMENSIONS SHOWN.  
6. WHERE APPLICABLE - TACK WELD AS  
REQUIRED TO SECURE ROLLED CAN.

MATERIAL:



TECHCRANE INTERNATIONAL, LLC.

17639 HARD HAT DRIVE COVINGTON, LA. 70435 U.S.A.  
PHONE (985) 871-0056 FAX (985) 871-0065

T120-58-100 GENERAL ARRANGEMENT

DATE:

9/28/2016

REVISION NO.:

3.0

CO NO.:

SHEET 2 OF 4

4

3

2

1

D

D

C

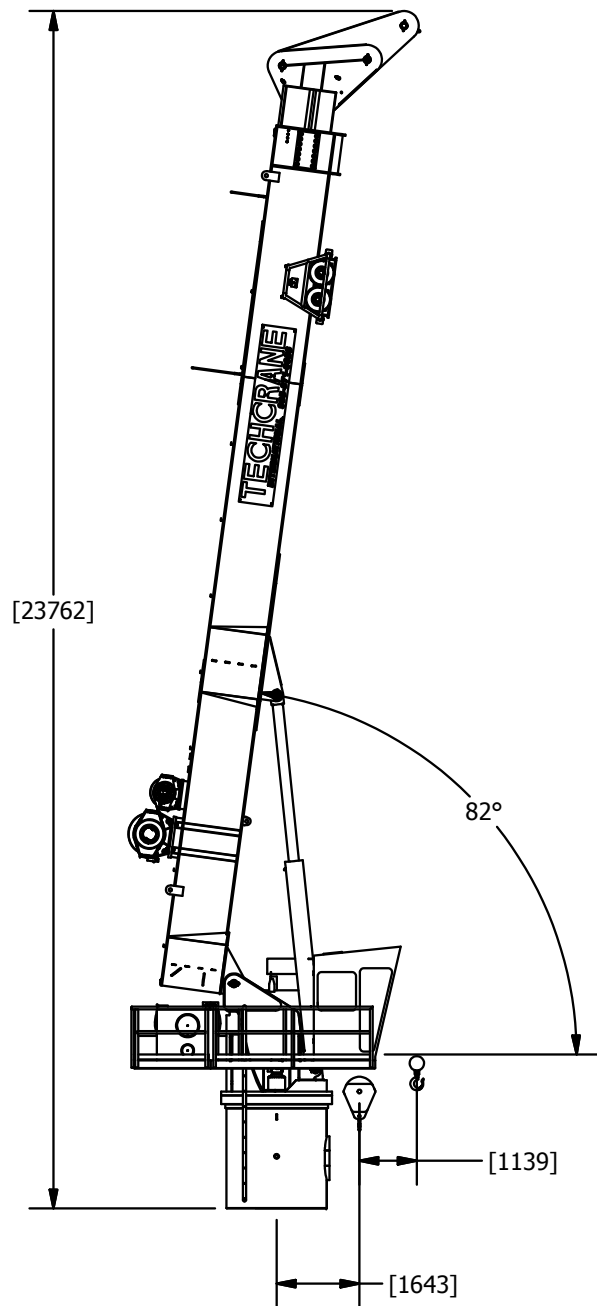
C

B

B

A

A



BOOM UP RETRACTED

82°

INFORMATION CONTAINED HEREON IS  
CONFIDENTIAL AND TRADE SECRET  
DO NOT DISCLOSE, USE OR REPRODUCE  
WITHOUT PRIOR WRITTEN APPROVAL  
FROM TECHCRANE INTERNATIONAL, LLC.

UNLESS OTHERWISE SPECIFIED  
ALL DIMENSIONS ARE IN INCHES  
[ ] INDICATES MILLIMETERS  
**TOLERANCES**

FRACTIONAL DIMENSIONS  $+\frac{1}{16}/-0$   
SURFACE FINISHES 125√

FILE NAME:  
C:\Work\DESIGNS\1 PARTS\9999\GA\T120-58-100 GENERAL ARRANGEMENT.dwg

DESIGNED BY:  
F. SHAD

DRAWN BY:  
lbaylis

WEIGHT:  
122016 lbmass

APPROVED BY:  
SEE APPROVAL STAMP

DESIGN STATE:  
WorkInProgress

MATERIAL NOTES:  
1. ALL NDE TO BE IN ACCORDANCE AND  
CALIBRATED TO AWS D1.1.  
2. BURN PER DIMENSIONS SHOWN.  
3. PLATE FLATNESS AFTER BURNING TO BE  
WITHIN ASTM SPECIFICATIONS.  
4. REFER TO API SPEC 2C LATEST EDITION.  
5. WHERE APPLICABLE - ROLL FORM PER  
DIMENSIONS SHOWN.  
6. WHERE APPLICABLE - TACK WELD AS  
REQUIRED TO SECURE ROLLED CAN.

MATERIAL:



**TECHCRANE INTERNATIONAL, LLC.**

17639 HARD HAT DRIVE COVINGTON, LA. 70435 U.S.A.  
PHONE (985) 871-0056 FAX (985) 871-0065

**T120-58-100 GENERAL ARRANGEMENT**

DATE:  
9/28/2016

REVISION NO.:  
3.0

CO NO.:

SHEET 3 OF 4

PART/DWG. NO.:

**T0120-58-100-GA**

4

3

2

1

A

4

3

2

1

D

D

C

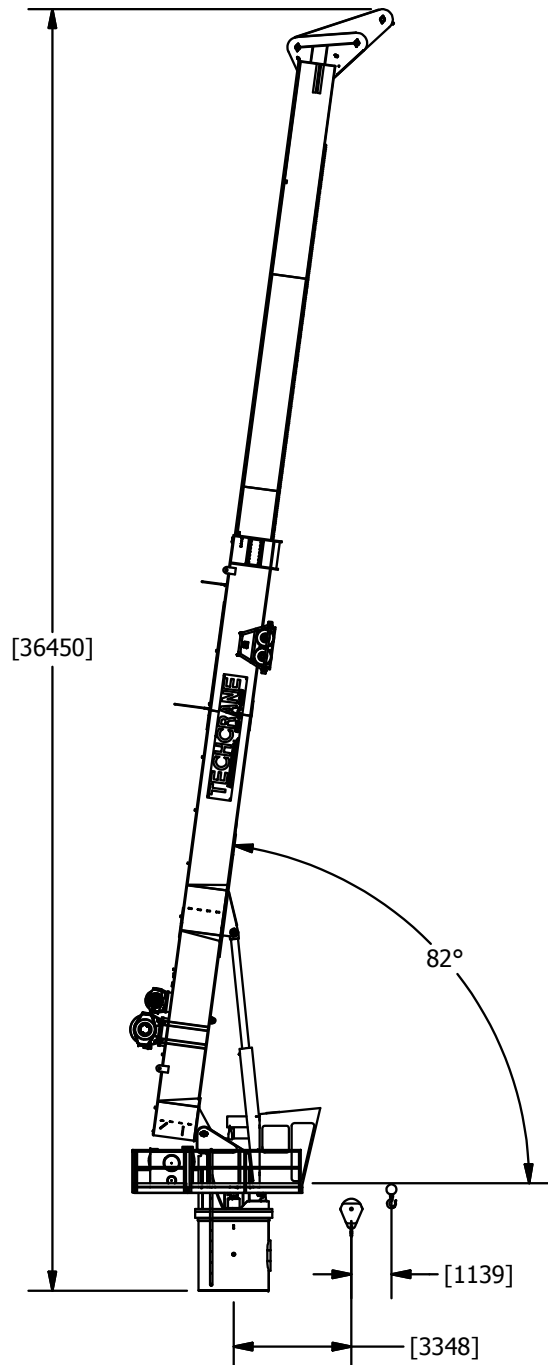
C

B

B

A

A



### BOOM UP EXTENDED VIEW

INFORMATION CONTAINED HEREON IS  
CONFIDENTIAL AND TRADE SECRET  
DO NOT DISCLOSE, USE OR REPRODUCE  
WITHOUT PRIOR WRITTEN APPROVAL  
FROM TECHCRANE INTERNATIONAL, LLC.

UNLESS OTHERWISE SPECIFIED  
ALL DIMENSIONS ARE IN INCHES  
[ ] INDICATES MILLIMETERS  
**TOLERANCES**

FRACTIONAL DIMENSIONS  $+\frac{1}{16}/-0$   
SURFACE FINISHES 125✓

FILE NAME:  
C:\Work\DESIGNS\1 PARTS\9999\GA\T120-58-100 GENERAL ARRANGEMENT.dwg

DESIGNED BY:  
F. SHAD

DRAWN BY:  
lbaylis

WEIGHT:  
122016 lbmass

APPROVED BY:  
SEE APPROVAL STAMP

DESIGN STATE:  
WorkInProgress

MATERIAL NOTES:  
1. ALL NDE TO BE IN ACCORDANCE AND  
CALIBRATED TO AWS D1.1.  
2. BURN PER DIMENSIONS SHOWN.  
3. PLATE FLATNESS AFTER BURNING TO BE  
WITHIN ASTM SPECIFICATIONS.  
4. REFER TO API SPEC 2C LATEST EDITION.  
5. WHERE APPLICABLE - ROLL FORM PER  
DIMENSIONS SHOWN.  
6. WHERE APPLICABLE - TACK WELD AS  
REQUIRED TO SECURE ROLLED CAN.

MATERIAL:



**TECHCRANE INTERNATIONAL, LLC.**

17639 HARD HAT DRIVE COVINGTON, LA. 70435 U.S.A.  
PHONE (985) 871-0056 FAX (985) 871-0065

### T120-58-100 GENERAL ARRANGEMENT

DATE:  
9/28/2016

REVISION NO.:  
3.0

CO NO.:

SHEET 4 OF 4

PART/DWG. NO.:

**T0120-58-100-GA**

4

3

2

1

A