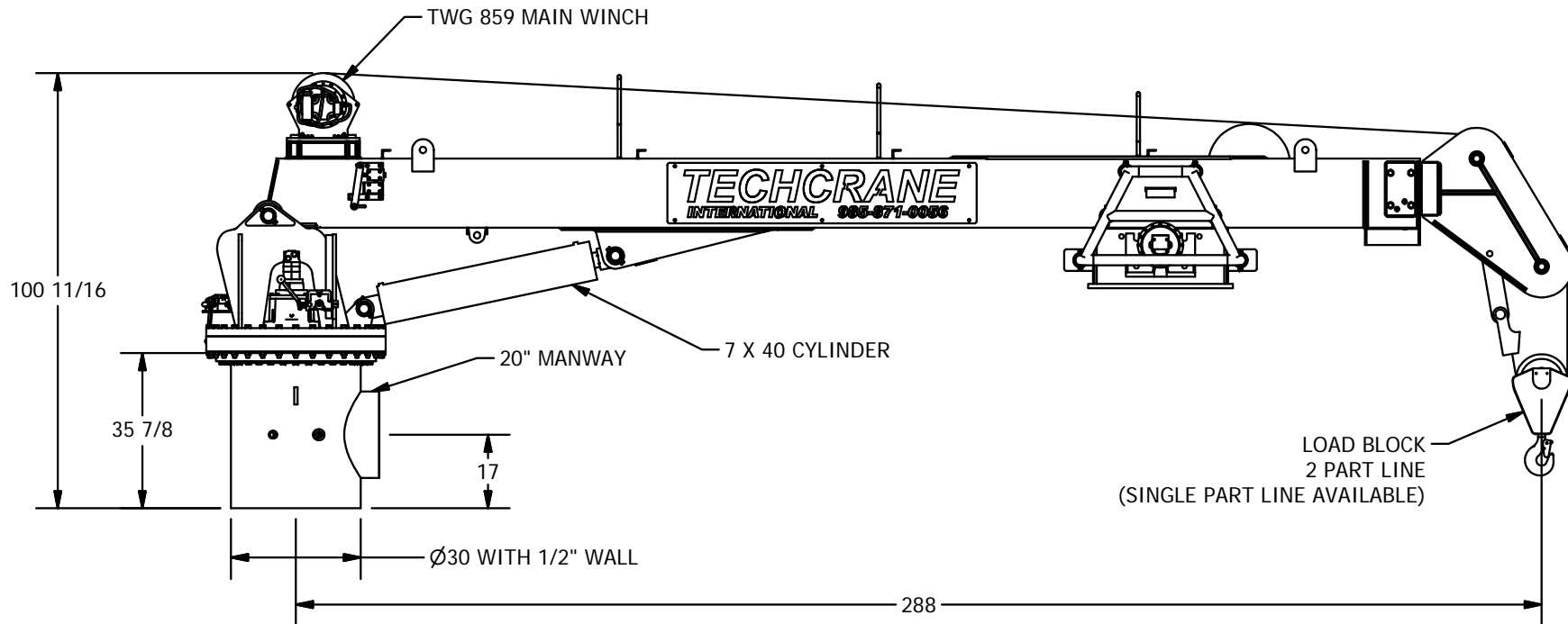



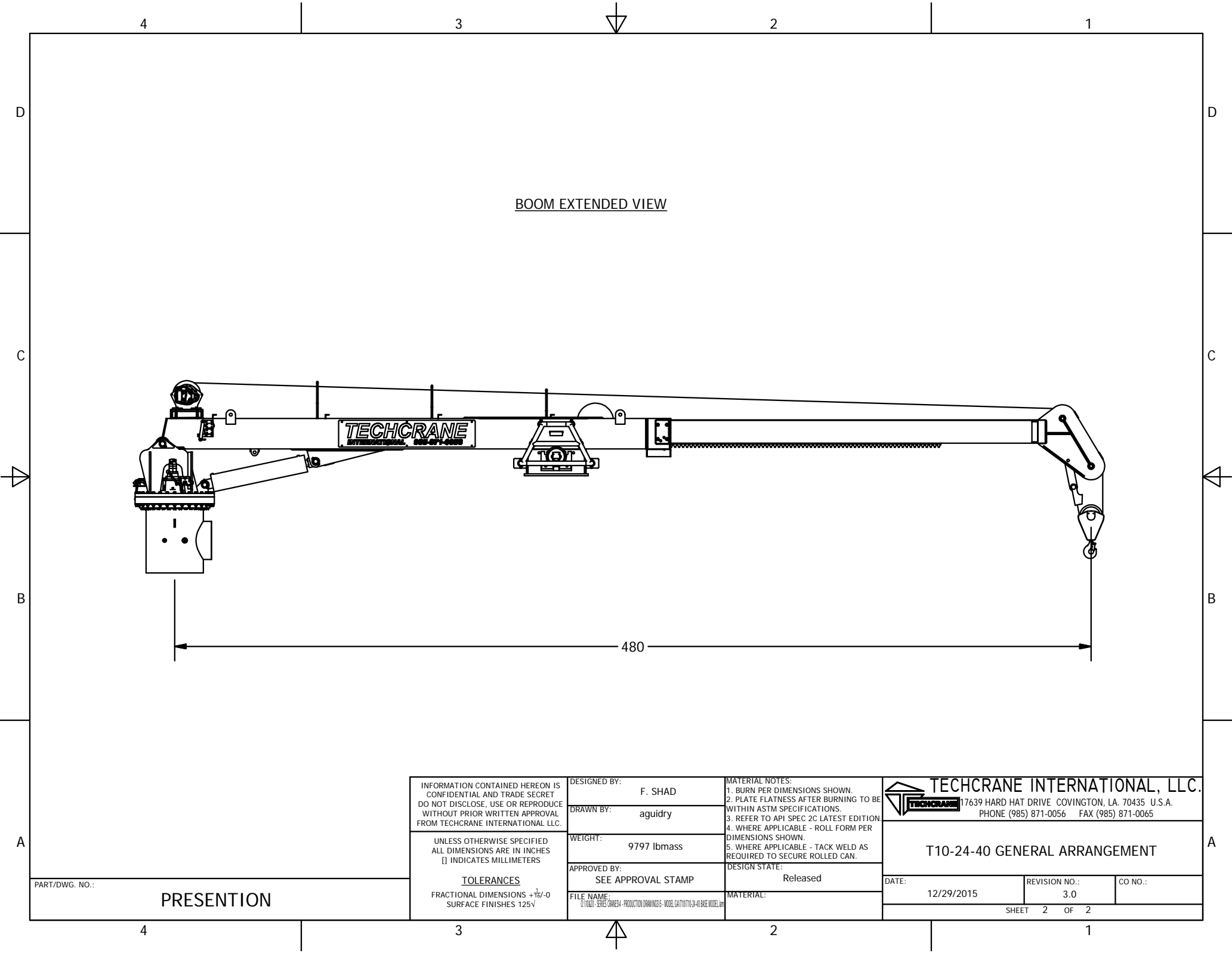
**NOTES:**

1. THE INFORMATION PROVIDED IN HTIS DOCUMENT IS INTENDED FOR INFORMATIONAL PURPOSES ONLY AND IS SUBJECT TO CHANGE WITHOUT NOTICE
2. WEIGHT SHOWN IS APPROXIMATE AND DOES NOT INCLUDE WELD, WIRE ROPE, HARDWARE AND MISCELLANEOUS PARTS.
3. HOSE HANDLING CONFIGURATION IS AVAILABLE.



INFORMATION CONTAINED HEREON IS CONFIDENTIAL AND TRADE SECRET DO NOT DISCLOSE, USE OR REPRODUCE WITHOUT PRIOR WRITTEN APPROVAL FROM TECHCRANE INTERNATIONAL LLC.	DESIGNED BY: F. SHAD	MATERIAL NOTES: 1. BURN PER DIMENSIONS SHOWN. 2. PLATE FLATNESS AFTER BURNING TO BE WITHIN ASTM SPECIFICATIONS. 3. REFER TO API SPEC 2C LATEST EDITION 4. WHERE APPLICABLE - ROLL FORM PER DIMENSIONS SHOWN. 5. WHERE APPLICABLE - TACK WELD AS REQUIRED TO SECURE ROLLED CAN.	 <b>TECHCRANE INTERNATIONAL, LLC.</b> 17639 HARD HAT DRIVE COVINGTON, LA. 70435 U.S.A. PHONE (985) 871-0056 FAX (985) 871-0065		
	DRAWN BY: agudry				
UNLESS OTHERWISE SPECIFIED ALL DIMENSIONS ARE IN INCHES [ ] INDICATES MILLIMETERS  <u>TOLERANCES</u>  FRACTIONAL DIMENSIONS $\pm \frac{1}{16}$ / -0 SURFACE FINISHES 125V	WEIGHT: 9797 lbmass	DESIGN STATE: Released	T10-24-40 GENERAL ARRANGEMENT		
	APPROVED BY: SEE APPROVAL STAMP				
	FILE NAME: C:\11040\SERIES CRANES\A- PRODUCTION DRAWINGS\A- MODEL CATT10T10-24-40 BASE MODEL.dwg	MATERIAL:			
			DATE: 12/29/2015	REVISION NO.: 3.0	CO NO.:
			SHEET 1 OF 2		

PRESENTION



4

3

2

1

D

D

C

C

B

B

A

A

# BOOM UP RETRACTED VIEW

363 5/16

81°

50 7/16

PART/DWG. NO.:

PRESENTION

INFORMATION CONTAINED HEREON IS  
CONFIDENTIAL AND TRADE SECRET  
DO NOT DISCLOSE, USE OR REPRODUCE  
WITHOUT PRIOR WRITTEN APPROVAL  
FROM TECHCRANE INTERNATIONAL LLC.

UNLESS OTHERWISE SPECIFIED  
ALL DIMENSIONS ARE IN INCHES  
[] INDICATES MILLIMETERS

## TOLERANCES

FRACTIONAL DIMENSIONS  $\pm \frac{1}{16}$  / -0  
SURFACE FINISHES 125V

DESIGNED BY:

F. SHAD

DRAWN BY:

aguidry

WEIGHT:

9797 lbmass

APPROVED BY:

SEE APPROVAL STAMP

FILE NAME:

C:\110401- SERIES CRANES-A- PRODUCTION DRAWINGS-S- MODEL GA110T10-24-40 BASE MODEL.dwg

MATERIAL NOTES:

1. BURN PER DIMENSIONS SHOWN.
2. PLATE FLATNESS AFTER BURNING TO BE WITHIN ASTM SPECIFICATIONS.
3. REFER TO API SPEC 2C LATEST EDITION.
4. WHERE APPLICABLE - ROLL FORM PER DIMENSIONS SHOWN.
5. WHERE APPLICABLE - TACK WELD AS REQUIRED TO SECURE ROLLED CAN.

DESIGN STATE:

Released

MATERIAL:



# TECHCRANE INTERNATIONAL, LLC.

17639 HARD HAT DRIVE COVINGTON, LA. 70435 U.S.A.  
PHONE (985) 871-0056 FAX (985) 871-0065

## T10-24-40 GENERAL ARRANGEMENT

DATE:

12/29/2015

REVISION NO.:

3.0

CO NO.:

SHEET 3 OF 4

4

3

2

1

4

3

2

1

D

D

C

C

B

B

A

A

# BOOM UP EXTENDED VIEW

553 9/16

81°

79 15/16

PART/DWG. NO.:

PRESENTION

INFORMATION CONTAINED HEREON IS  
CONFIDENTIAL AND TRADE SECRET  
DO NOT DISCLOSE, USE OR REPRODUCE  
WITHOUT PRIOR WRITTEN APPROVAL  
FROM TECHCRANE INTERNATIONAL LLC.

UNLESS OTHERWISE SPECIFIED  
ALL DIMENSIONS ARE IN INCHES  
[] INDICATES MILLIMETERS

## TOLERANCES

FRACTIONAL DIMENSIONS  $\pm \frac{1}{16}$  / -0  
SURFACE FINISHES 125V

DESIGNED BY:

F. SHAD

DRAWN BY:

aguidry

WEIGHT:

9797 lbmass

APPROVED BY:

SEE APPROVAL STAMP

FILE NAME:

C:\YOUNG\SERIES CRANES-A- PRODUCTION DRAWINGS-S- MODEL GAUT10T10-24-40 BASE MODEL.dwg

MATERIAL NOTES:

1. BURN PER DIMENSIONS SHOWN.
2. PLATE FLATNESS AFTER BURNING TO BE WITHIN ASTM SPECIFICATIONS.
3. REFER TO API SPEC 2C LATEST EDITION.
4. WHERE APPLICABLE - ROLL FORM PER DIMENSIONS SHOWN.
5. WHERE APPLICABLE - TACK WELD AS REQUIRED TO SECURE ROLLED CAN.

DESIGN STATE:

Released

MATERIAL:



TECHCRANE INTERNATIONAL, LLC.

17639 HARD HAT DRIVE COVINGTON, LA. 70435 U.S.A.  
PHONE (985) 871-0056 FAX (985) 871-0065

T10-24-40 GENERAL ARRANGEMENT

DATE:

12/29/2015

REVISION NO.:

3.0

CO NO.:

SHEET 4 OF 4