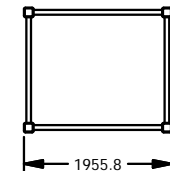


1. THIS CRANE IS DESIGNED AND BUILT IN ACCORDANCE WITH API 2C LATEST EDITION.
2. CRANE SHOWN IN BOOM REST POSITION REFER TO PLATFORM LAYOUT DRAWING 2006-4300-07-0001 REV. 1
3. AREA CLASSIFICATION: CLASS I, DIVISION II, GROUP D, TEMPERATURE CLASS T3
4. DESIGN WIND SPEED 17.8M PER SEC. (IN SERVICE) 44M PER SEC. (OUT OF SERVICE AND IN BOOM REST)
5. SPEED PERFORMANCE
MAIN: 45M PER MIN.
AUX: 90M PER MIN.
BOOM: 0-82° 121 SEC.
SLEWING: 1 RPM
6. LOAD CHART FOR VARIOUS SEA STATES HAS BEEN SUBMITTED AND APPROVED. "SAFE WORKING LOAD" TO REFER TO LOAD CHART FOR SAFE WORKING LOAD.
7. CORRECT LOCATION OF C.G. & LIFTING CHART, WEIGHTS & DIMENSIONS OF EACH PIECE TO BE DETERMINE



SECTION G-G

PRESENTATION



TECHCRANE INTERNATIONAL, LLC.

17639 HARD HAT DRIVE COVINGTON, LA. 70435 U.S.A.
PHONE (985) 871-0056 FAX (985) 871-0065

L120-90 VTECH
GENERAL ARRANGEMENT

DATE: 12/6/2013

REVISION NO.:	2.5
---------------	-----

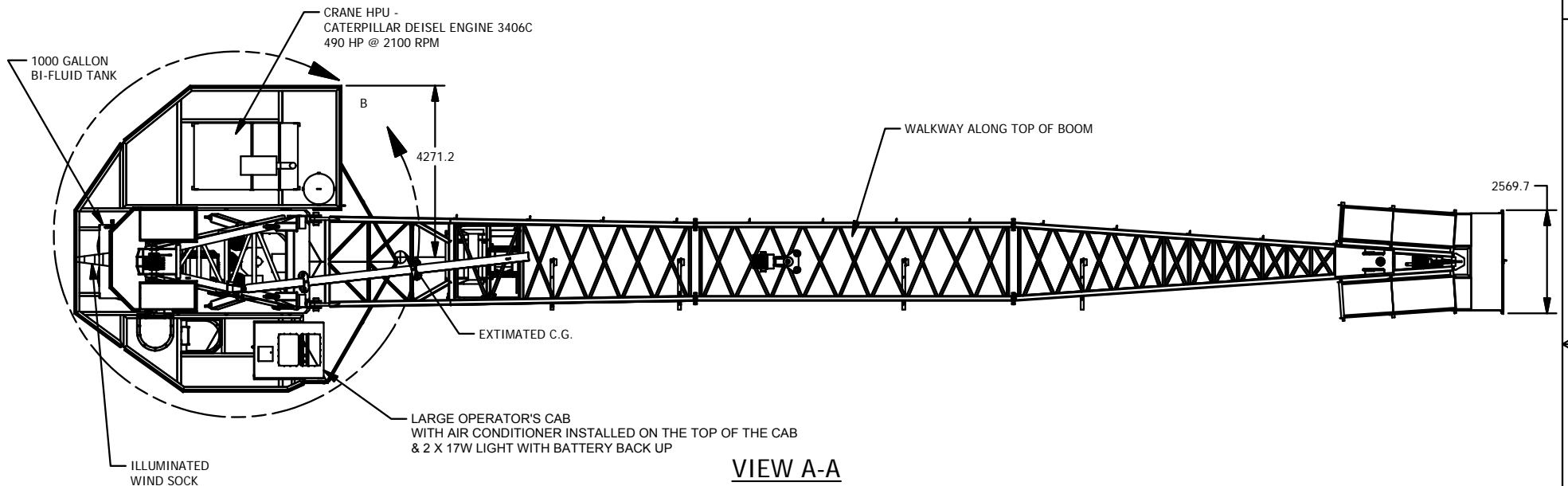
SHEET 1 OF 6

NOTES:


1. ENGINE SILENCER AND EXHAUST IS INSTALLED AT THE FACTORY ON THE ENGINE
2. FOR THE PURPOSE OF CLARITY THE LOCATIONS OF FIRE EXTINGUISHERS AND HOSE REELS ARE NOT SHOWN. THEY ARE TO BE DETERMINED DURING FINAL ASSEMBLY.

BOOM REST NOTES:

EXTIMATED AXIAL FORCE BOTH LOCATIONS: 8200 KG
EXTIMATED LATERAL LOAD BOTH LOCATIONS: 900 KG (CREATED BY HYDRAULIC FORCE)
WIND LOAD ON THE BOOM AT 140 KM/HOUR AT 18000mm IS APPROX. 3445 KG
WIND LOAD ON THE BOOM AT 140 KM/HOUR AT 18200mm IS APPROX. 3406 KG
ELEVATION BY END USER

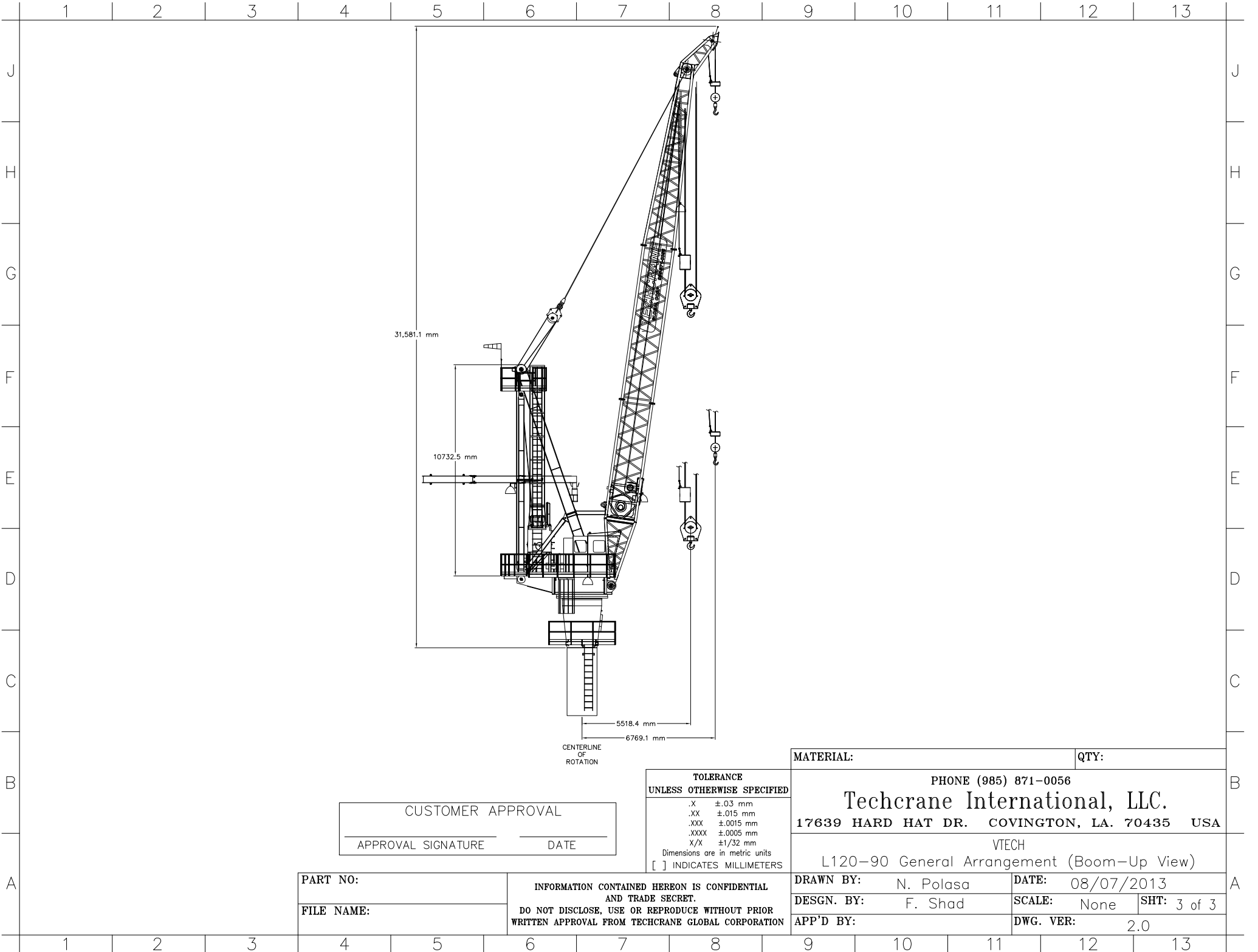


VIEW A-A

INFORMATION CONTAINED HEREON IS CONFIDENTIAL AND TRADE SECRET DO NOT DISCLOSE, USE OR REPRODUCE WITHOUT PRIOR WRITTEN APPROVAL FROM TECHCRANE INTERNATIONAL LLC.	DESIGNED BY: <div>F. SHAD</div>	MATERIAL NOTES: 1. BURN PER DIMENSIONS SHOWN. 2. PLATE FLATNESS AFTER BURNING TO BE WITHIN ASTM SPECIFICATIONS. 3. REFER TO API SPEC 2C LATEST EDITION 4. WHERE APPLICABLE - ROLL FORM PER DIMENSIONS SHOWN. 5. WHERE APPLICABLE - TACK WELD AS REQUIRED TO SECURE ROLLED CAN.		TECHCRANE INTERNATIONAL, LLC.	
	DRAWN BY: <div>lbaylis</div>			17639 HARD HAT DRIVE COVINGTON, LA. 70435 U.S.A. PHONE (985) 871-0056 FAX (985) 871-0065	
	WEIGHT: <div>125000 APPROX.</div>			L120-90 VTECH GENERAL ARRANGEMENT	
	APPROVED BY: <div>D. SHAD</div>			DATE: <div>12/6/2013</div>	
UNLESS OTHERWISE SPECIFIED ALL DIMENSIONS ARE IN INCHES [] INDICATES MILLIMETERS <u>TOLLERANCES</u> FRACTIONAL DIMENSIONS $\pm \frac{1}{16}$ / -0 SURFACE FINISHES 125√	FILE NAME: <div>C:\Design_Designs\100 - SERIES CRANES\PRODUCTION DRAWINGS\4-MODELS\CALCUL\TOP\PAI\CALC\PAI VTECH.dwg</div>	MATERIAL: <div>-</div>	REVISION NO.: <div>2.5</div>		
	SHEET 2 OF 6				

PRESENTATION

PART/DWG. NO.:



MATERIAL:		QTY:	
PHONE (985) 871-0056			
Techcrane International, LLC.			
17639 HARD HAT DR. COVINGTON, LA. 70435 USA			
VTECH			
L120-90 General Arrangement (Boom-Up View)			
DRAWN BY: N. Polasa		DATE: 08/07/2013	
DESGN. BY: F. Shad		SCALE: None	SHT: 3 of 3
APP'D BY:		DWG. VER: 2.0	

PART NO:	INFORMATION CONTAINED HEREON IS CONFIDENTIAL AND TRADE SECRET. DO NOT DISCLOSE, USE OR REPRODUCE WITHOUT PRIOR WRITTEN APPROVAL FROM TECHCRANE GLOBAL CORPORATION
FILE NAME:	

4

3

2

1

EARTHING WIRE CONNECTED FROM
GANTRY TO MACHINERY DECK

EARTHING WIRE CONNECTED FROM
MACHINERY DECK TO SLIP RING

EARTHING WIRE CONNECTED FROM
THE BOOM TO THE MACHINERY DECK

VIEW H-H

INFORMATION CONTAINED HEREON IS
CONFIDENTIAL AND TRADE SECRET
DO NOT DISCLOSE, USE OR REPRODUCE
WITHOUT PRIOR WRITTEN APPROVAL
FROM TECHCRANE INTERNATIONAL LLC.

UNLESS OTHERWISE SPECIFIED
ALL DIMENSIONS ARE IN INCHES
[] INDICATES MILLIMETERS

TOLLERANCES

FRACTIONAL DIMENSIONS $\pm \frac{1}{16}$ / -0
SURFACE FINISHES 125V

DESIGNED BY:

F. SHAD

DRAWN BY:

lbaylis

WEIGHT:

125000 APPROX.

APPROVED BY:

D. SHAD

FILE NAME:

\\design_images\106 - SERIES CRANES\PRODUCTION DRAWINGS\H-MODELS\CALLOUTS\H-CALLOUT-H VTECH.dwg

MATERIAL NOTES:

1. BURN PER DIMENSIONS SHOWN.
2. PLATE FLATNESS AFTER BURNING TO BE WITHIN ASTM SPECIFICATIONS.
3. REFER TO API SPEC 2C LATEST EDITION.
4. WHERE APPLICABLE - ROLL FORM PER DIMENSIONS SHOWN.
5. WHERE APPLICABLE - TACK WELD AS REQUIRED TO SECURE ROLLED CAN.

DESIGN STATE:

Released

MATERIAL:

-



TECHCRANE INTERNATIONAL, LLC.

17639 HARD HAT DRIVE COVINGTON, LA. 70435 U.S.A.
PHONE (985) 871-0056 FAX (985) 871-0065

L120-90 VTECH
GENERAL ARRANGEMENT

DATE:

12/6/2013

REVISION NO.:

2.5

SHEET 6 OF 6

PART/DWG. NO.:

PRESENTATION

4

3

2

1

4

3

2

1

D

D

C

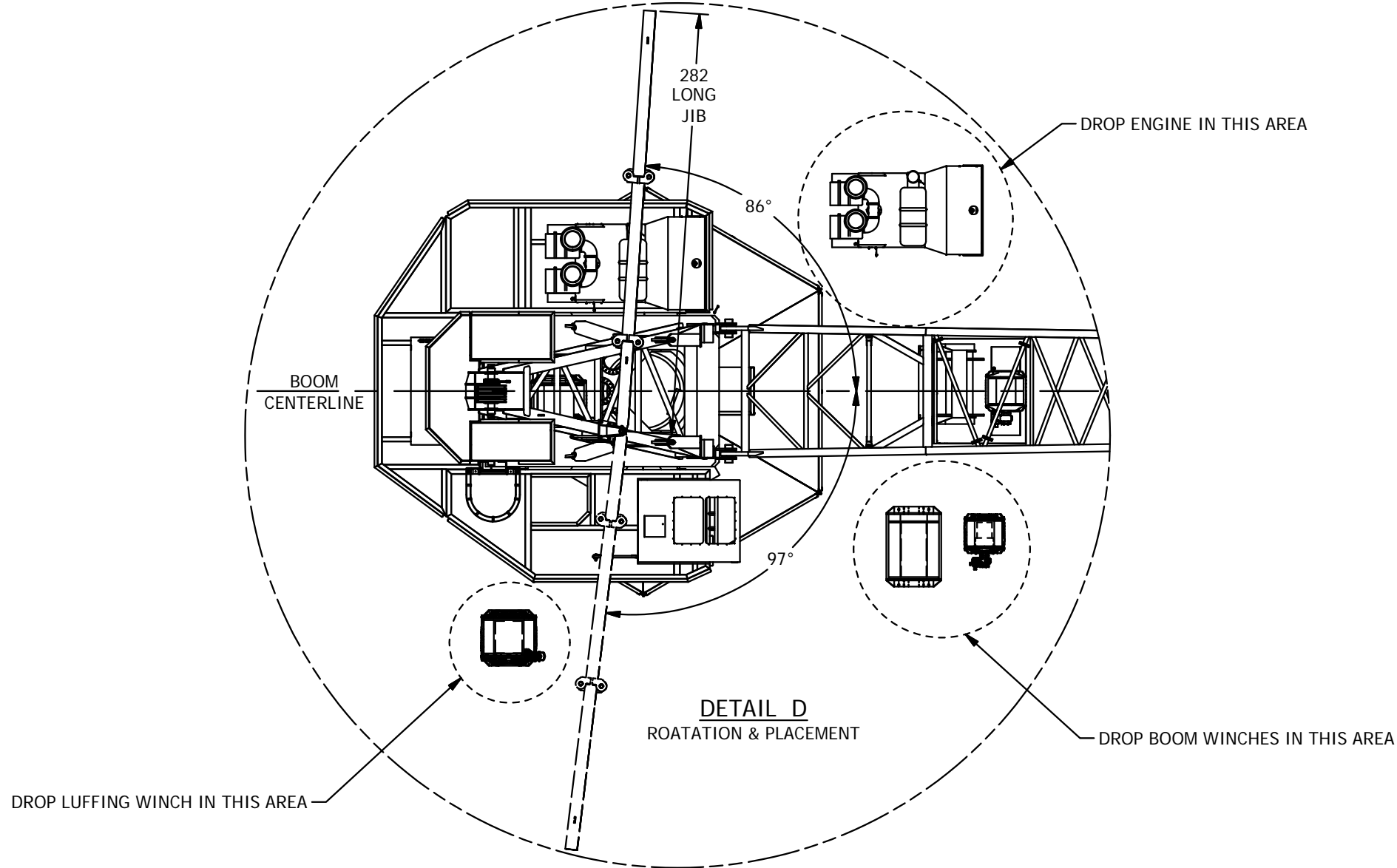
C

B

B

A

A



PART/DWG. NO.:

INFORMATION CONTAINED HEREON IS
CONFIDENTIAL AND TRADE SECRET
DO NOT DISCLOSE, USE OR REPRODUCE
WITHOUT PRIOR WRITTEN APPROVAL
FROM TECHCRANE INTERNATIONAL LLC.

UNLESS OTHERWISE SPECIFIED
ALL DIMENSIONS ARE IN INCHES
[] INDICATES MILLIMETERS

TOLLERANCES

FRACTIONAL DIMENSIONS $\pm \frac{1}{16}$ / 0
SURFACE FINISHES 125V

DESIGNED BY:

F. SHAD

DRAWN BY:

lbaylis

WEIGHT:

N/A

APPROVED BY:

FILE NAME:

C:\Design_Design\101 - SERIES CRANES\PRODUCTION DRAWINGS\MODE-641\COLL-CR-HULL-CR-140-01.dwg

MATERIAL NOTES:

1. BURN PER DIMENSIONS SHOWN.
2. PLATE FLATNESS AFTER BURNING TO BE WITHIN ASTM SPECIFICATIONS.
3. REFER TO API SPEC 2C LATEST EDITION.
4. WHERE APPLICABLE - ROLL FORM PER DIMENSIONS SHOWN.
5. WHERE APPLICABLE - TACK WELD AS REQUIRED TO SECURE ROLLED CAN.

DESIGN STATE:

WorkInProgress

MATERIAL:

-



TECHCRANE INTERNATIONAL, LLC.

17639 HARD HAT DRIVE COVINGTON, LA. 70435 U.S.A.
PHONE (985) 871-0056 FAX (985) 871-0065

L120 JIB - GENERAL ARRANGEMENT

DATE:

10/24/2013

REVISION NO.:

2.0

SHEET 3 OF 4

4

3

2

1

D

D

C

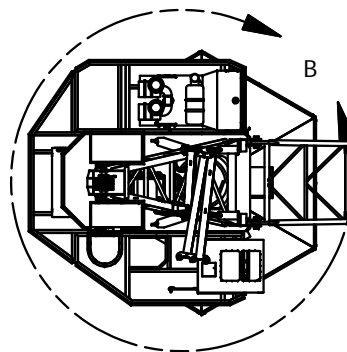
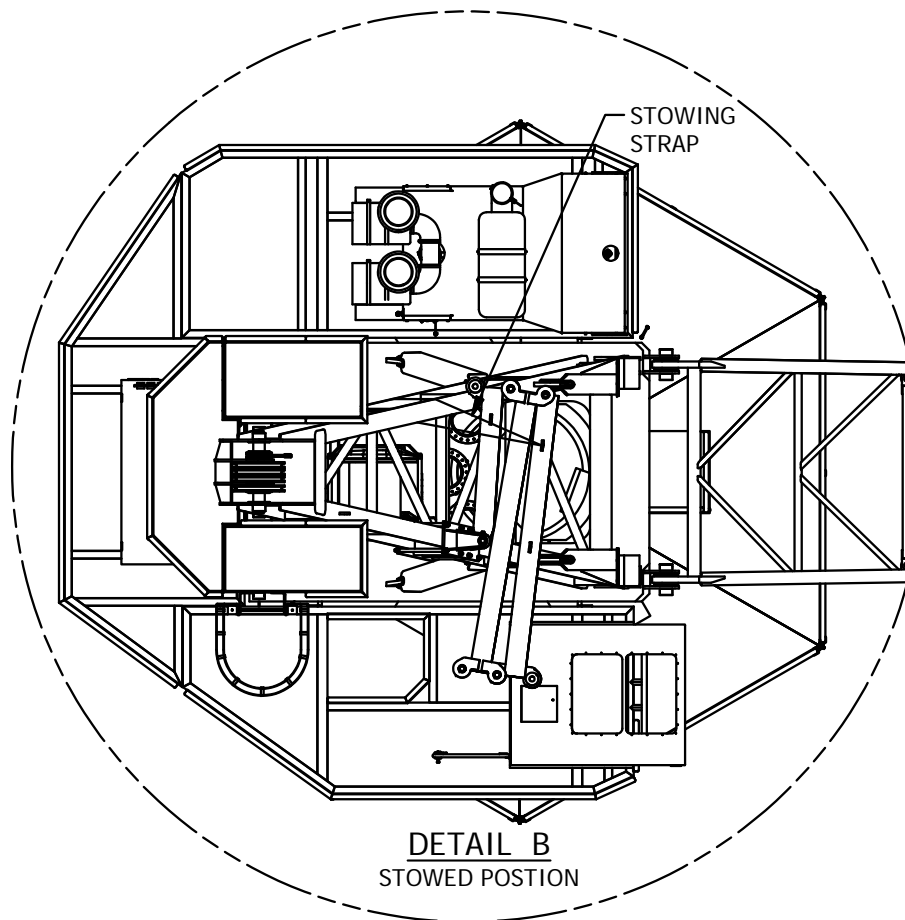
C

B

B

A

A



PART/DWG. NO.:

INFORMATION CONTAINED HEREON IS
CONFIDENTIAL AND TRADE SECRET
DO NOT DISCLOSE, USE OR REPRODUCE
WITHOUT PRIOR WRITTEN APPROVAL
FROM TECHCRANE INTERNATIONAL LLC.

UNLESS OTHERWISE SPECIFIED
ALL DIMENSIONS ARE IN INCHES
[] INDICATES MILLIMETERS

TOLLERANCES

FRACTIONAL DIMENSIONS $\pm \frac{1}{16} / -0$
SURFACE FINISHES 125V

DESIGNED BY:

F. SHAD

DRAWN BY:

lbaylis

WEIGHT:

N/A

APPROVED BY:

FILE NAME:

\\Design_Designator\Series\Drawings\PRODUCTION DRAWINGS\MODE-GAL\COLL-CR-HULL-CR-HQ-01.dwg

MATERIAL NOTES:

1. BURN PER DIMENSIONS SHOWN.
2. PLATE FLATNESS AFTER BURNING TO BE WITHIN ASTM SPECIFICATIONS.
3. REFER TO API SPEC 2C LATEST EDITION.
4. WHERE APPLICABLE - ROLL FORM PER DIMENSIONS SHOWN.
5. WHERE APPLICABLE - TACK WELD AS REQUIRED TO SECURE ROLLED CAN.

DESIGN STATE:

WorkInProgress

MATERIAL:

-



TECHCRANE INTERNATIONAL, LLC.

17639 HARD HAT DRIVE COVINGTON, LA. 70435 U.S.A.
PHONE (985) 871-0056 FAX (985) 871-0065

L120 JIB - GENERAL ARRANGEMENT

DATE:

10/24/2013

REVISION NO.:

2.0

SHEET 4 OF 4

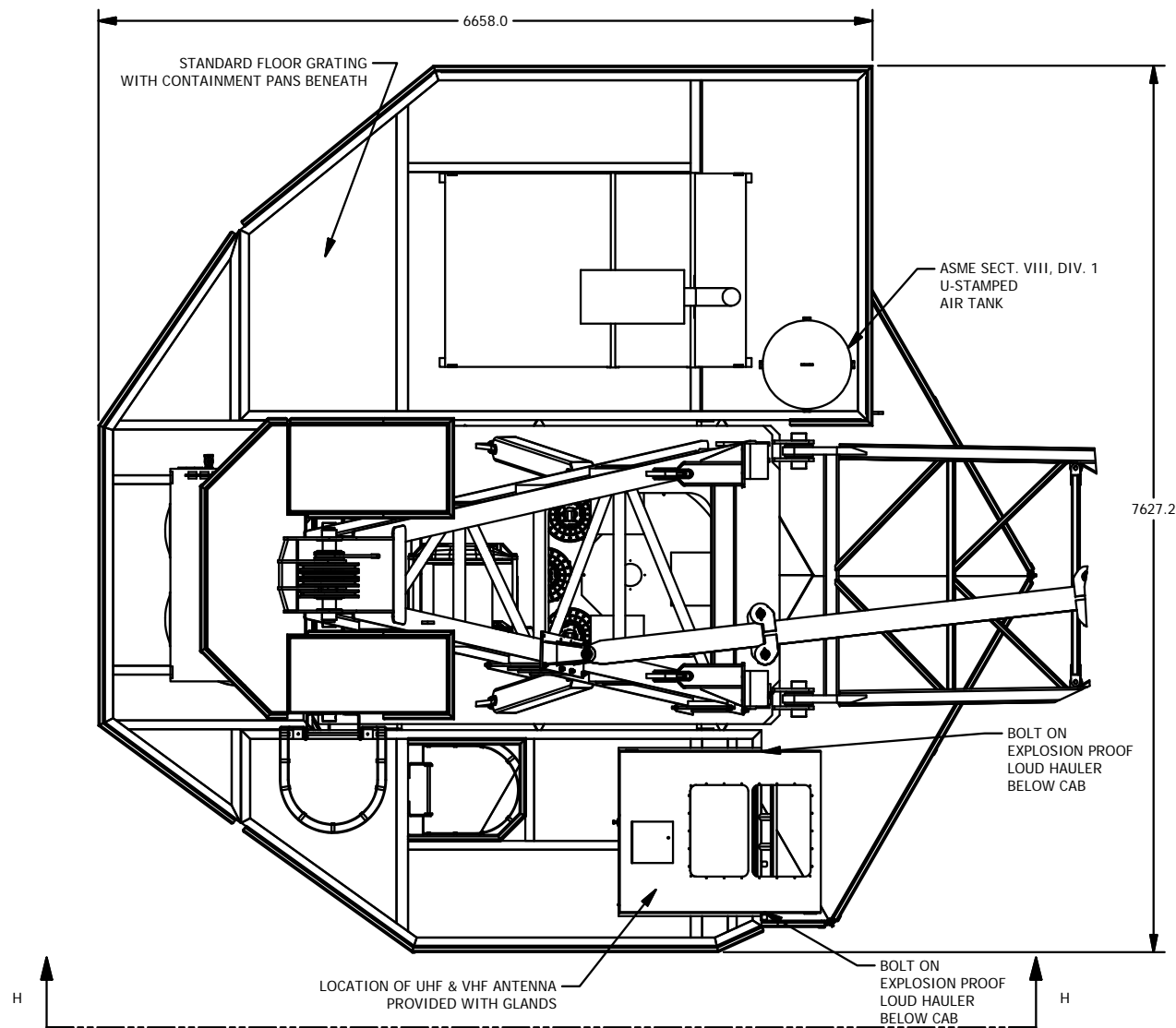
4

3

2

1

A



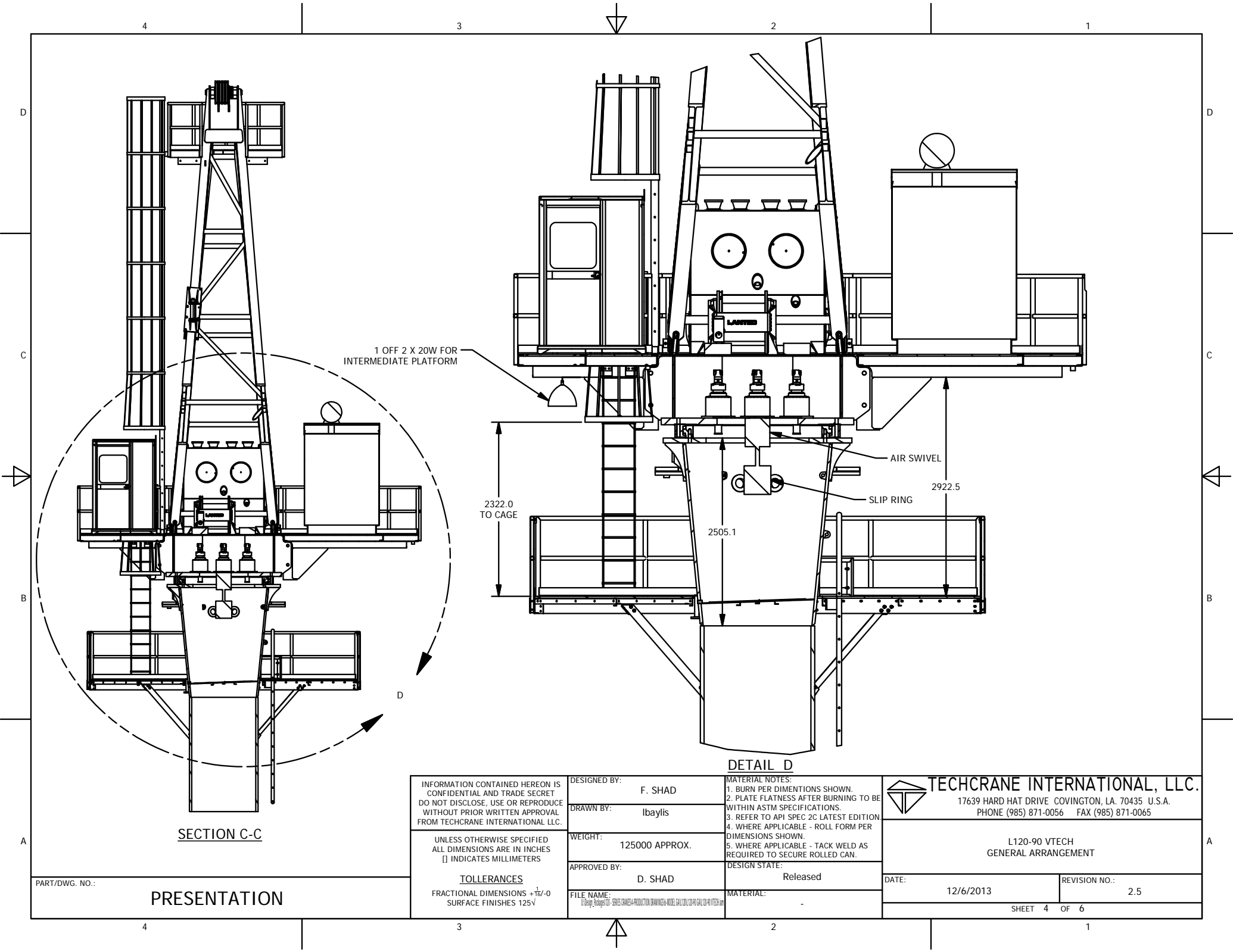
DETAIL B

INFORMATION CONTAINED HEREON IS CONFIDENTIAL AND TRADE SECRET DO NOT DISCLOSE, USE OR REPRODUCE WITHOUT PRIOR WRITTEN APPROVAL FROM TECHCRANE INTERNATIONAL LLC. UNLESS OTHERWISE SPECIFIED ALL DIMENSIONS ARE IN INCHES [] INDICATES MILLIMETERS <u>TOLLERANCES</u> FRACTIONAL DIMENSIONS $\pm \frac{1}{16} / -0$ SURFACE FINISHES 125 \sqrt	DESIGNED BY: F. SHAD	MATERIAL NOTES: 1. BURN PER DIMENTIONS SHOWN. 2. PLATE FLATNESS AFTER BURNING TO BE WITHIN ASTM SPECIFICATIONS. 3. REFER TO API SPEC 2C LATEST EDITION. 4. WHERE APPLICABLE - ROLL FORM PER DIMENSIONS SHOWN. 5. WHERE APPLICABLE - TACK WELD AS REQUIRED TO SECURE ROLLED CAN. DESIGN STATE: Released MATERIAL: -	TECHCRANE INTERNATIONAL, LLC. 17639 HARD HAT DRIVE COVINGTON, LA. 70435 U.S.A. PHONE (985) 871-0056 FAX (985) 871-0065	
	DRAWN BY: lbaylis			
	WEIGHT: 125000 APPROX.		L120-90 VTECH GENERAL ARRANGEMENT	
	APPROVED BY: D. SHAD			
	FILE NAME: \\design_images\104 - SERIES CRANES\PRODUCTION DRAWINGS\4-MODELS\CALLOUT\CP40\CALLOUT\CP40 VTECH.dwg		DATE: 12/6/2013	REVISION NO.: 2.5

PART/DWG. NO.:

PRESENTATION

SHEET 3 OF 6



4

3

2

1

D

D

C

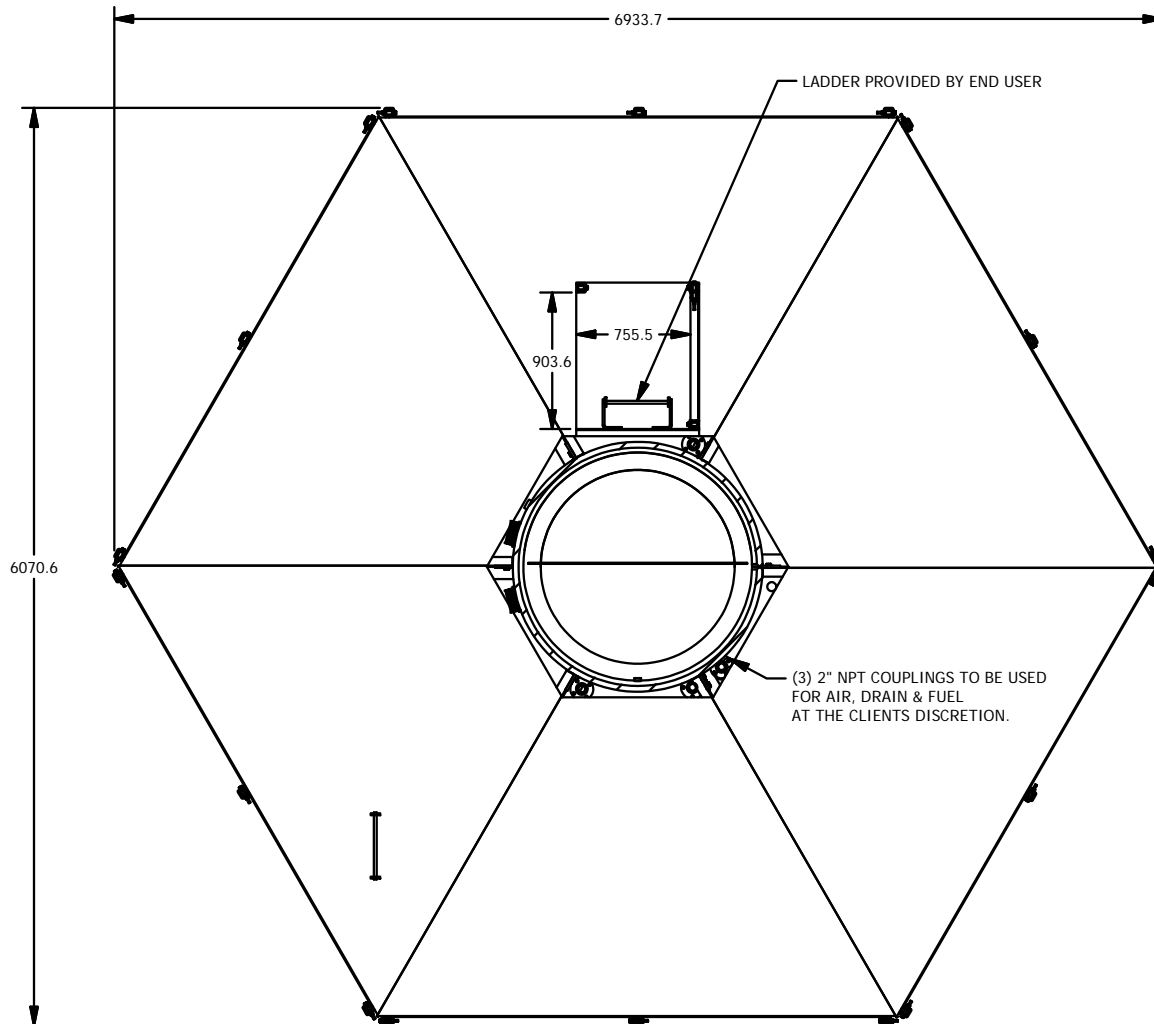
C

B

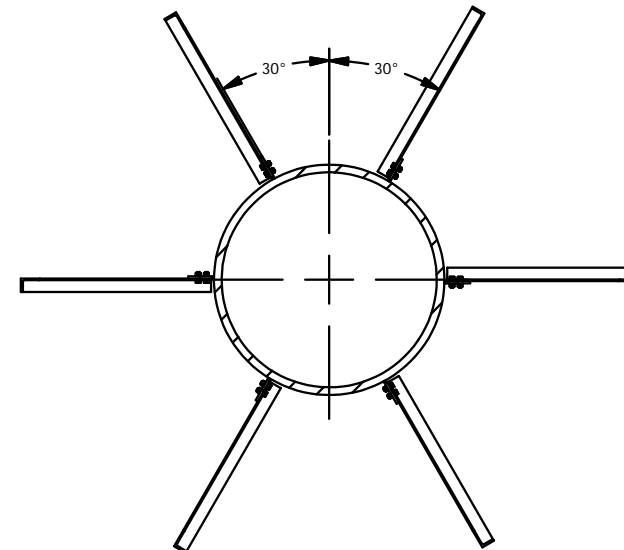
B

A

A



SECTION F-F



SECTION E-E

INFORMATION CONTAINED HEREON IS
CONFIDENTIAL AND TRADE SECRET
DO NOT DISCLOSE, USE OR REPRODUCE
WITHOUT PRIOR WRITTEN APPROVAL
FROM TECHCRANE INTERNATIONAL LLC.

UNLESS OTHERWISE SPECIFIED
ALL DIMENSIONS ARE IN INCHES
[] INDICATES MILLIMETERS

TOLERANCES

FRACTIONAL DIMENSIONS $\pm \frac{1}{16} \text{\"/>$

DESIGNED BY:

F. SHAD

DRAWN BY:

lbaylis

WEIGHT:

125000 APPROX.

APPROVED BY:

D. SHAD

FILE NAME:

C:\Design_Designs\106 - SERIES CRANES\PRODUCTION DRAWINGS\4-MODELS\CALCULATIONS\CALCULATED\106 VTECH.dwg

MATERIAL NOTES:

1. BURN PER DIMENSIONS SHOWN.
2. PLATE FLATNESS AFTER BURNING TO BE WITHIN ASTM SPECIFICATIONS.
3. REFER TO API SPEC 2C LATEST EDITION.
4. WHERE APPLICABLE - ROLL FORM PER DIMENSIONS SHOWN.
5. WHERE APPLICABLE - TACK WELD AS REQUIRED TO SECURE ROLLED CAN.

DESIGN STATE:

Released

MATERIAL:

-



TECHCRANE INTERNATIONAL, LLC.

17639 HARD HAT DRIVE COVINGTON, LA. 70435 U.S.A.
PHONE (985) 871-0056 FAX (985) 871-0065

L120-90 VTECH
GENERAL ARRANGEMENT

DATE:

12/6/2013

REVISION NO.:

2.5

SHEET 5 OF 6

PART/DWG. NO.:

PRESENTATION

4

3

2

1

