

4

3

2

1

CONTROL STATION  
REMOTE LOCATION  
DETERMINED BY CUSTOMER

Ø6'-5" TAILSWING

4'-10 1/8"

ESKRIDGE 130 GEARBOX (2)

30HP 60 GALLON HPU  
REMOTE LOCATION  
DETERMINED BY CUSTOMER

BOOM-UP  
ANGLE INDICATOR

TWG 1241 WINCH W/ 500' - 9/16" NON-TWIST  
WIRE ROPE FOR MIN. 180' HOOK TRAVEL.

CORROSION RESISTANT  
STEEL SHEAVES

LIFT POINT

SWING LIMITER  
VALVE FOR 365°  
LIMITED ROTATION

LIFT POINT

ANTI-TWO  
BLOCK SYSTEM

11'-5"

7'-9"

(2) 7" X 75-3/8" X 4-1/2"  
HYDRAULIC CYLINDERS  
W/ BOOTS

6'-8 7/8" CG

7'-7"

3'-6" - Ø18" MANWAY  
WITH BOLTED COVER

5/8" WALL THK

Ø3'-6" O.D.

15'- 7/8" CG

59'-6" (¢ OF ROTATION TO ¢ OF LOAD)

63'-10"

SWING LIMITER  
VALVE STOP

2 PART LINE  
TRAVEL BLOCK

#### NOTES:

1. DESIGN SERVICE TEMPERATURE DEG. -4F OR -20C MINIMUM.
2. HYDRAULIC HOSES & FITTINGS NOT SHOWN FOR CLARITY.
3. WEIGHT SHOWN IS APPROXIMATE AND DOES NOT INCLUDE WELD, WIRE ROPE, MISCELLANEOUS HARDWARE AND PARTS.

INFORMATION CONTAINED HEREON IS  
CONFIDENTIAL AND TRADE SECRET  
DO NOT DISCLOSE, USE OR REPRODUCE  
WITHOUT PRIOR WRITTEN APPROVAL  
FROM TECHCRANE INTERNATIONAL LLC.

UNLESS OTHERWISE SPECIFIED  
ALL DIMENSIONS ARE IN INCHES  
[ ] INDICATES MILLIMETERS

#### TOLERANCES

FRACTIONAL DIMENSIONS +1/16/-0  
SURFACE FINISHES 125√

DESIGNED BY:

F. SHAD

DRAWN BY:

M. O'CONNOR

WEIGHT:

16840 lbmass

APPROVED BY:

D. SHAD

FILE NAME:

C:\3D - SERIES CRANES - PRODUCTION DRAWINGS - MODEL GA\F30-60 MODEL GA.dwg

MATERIAL NOTES:

1. BURN PER DIMENSIONS SHOWN.
2. PLATE FLATNESS AFTER BURNING TO BE WITHIN ASTM SPECIFICATIONS.
3. REFER TO API SPEC 2C LATEST EDITION.
4. WHERE APPLICABLE - ROLL FORM PER DIMENSIONS SHOWN.
5. WHERE APPLICABLE - TACK WELD AS REQUIRED TO SECURE ROLLED CAN.

DESIGN STATE:

APPROVED

MATERIAL:

N/A



TECHCRANE INTERNATIONAL, LLC.

17639 HARD HAT DRIVE COVINGTON, LA. 70435 U.S.A.  
PHONE (985) 871-0056 FAX (985) 871-0065

BECHTEL CANADA CO. JOB #12875  
F30-60 GENERAL ARRANGEMENT

DATE:

3/26/2015

REVISION NO.:

0

SHEET 1 OF 2

PART/DWG. NO.:

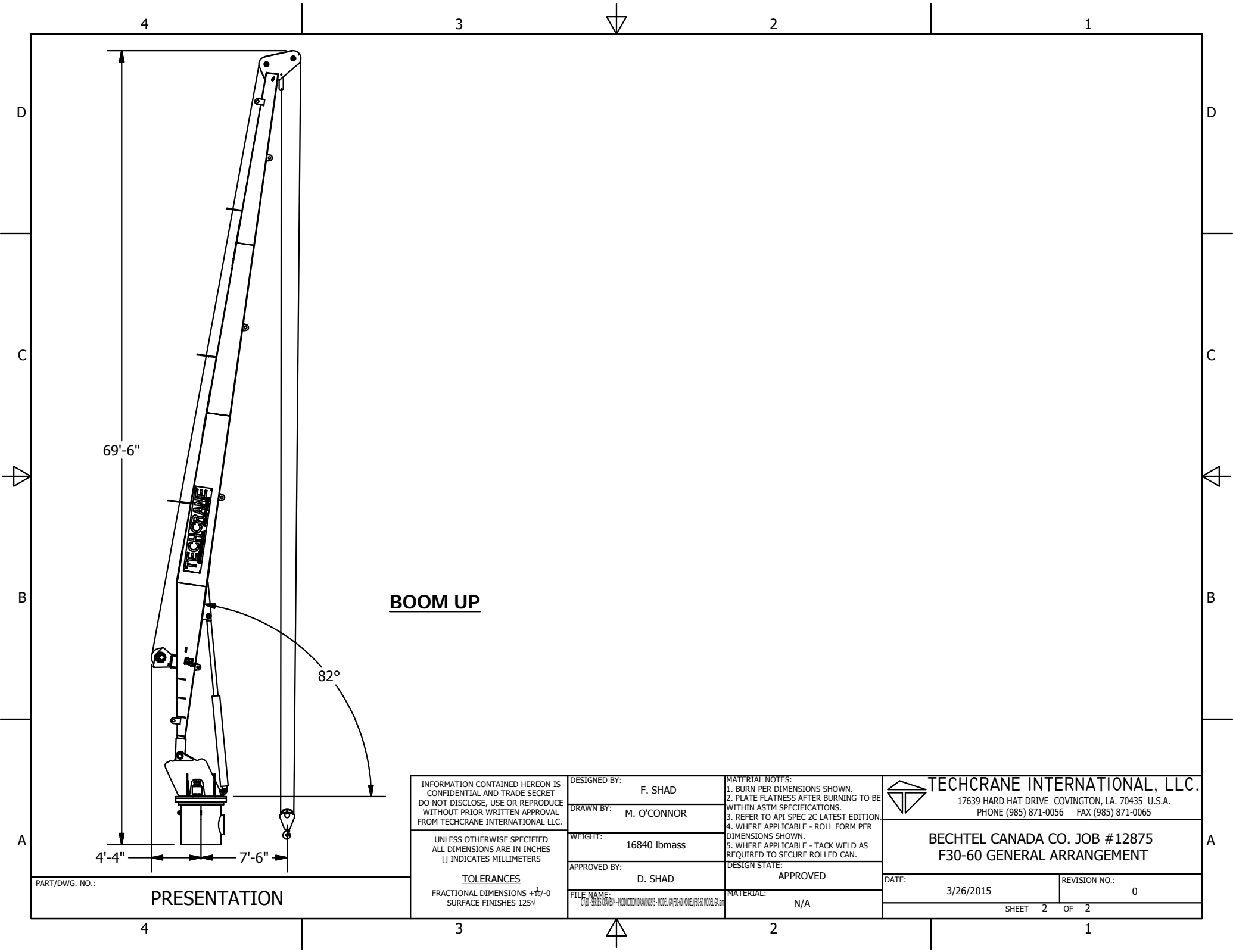
PRESENTATION

4

3

2

1



**BOOM UP**

INFORMATION CONTAINED HEREON IS  
CONFIDENTIAL AND TRADE SECRET  
DO NOT DISCLOSE, USE OR REPRODUCE  
WITHOUT PRIOR WRITTEN APPROVAL  
FROM TECHCRANE INTERNATIONAL LLC.

UNLESS OTHERWISE SPECIFIED  
ALL DIMENSIONS ARE IN INCHES  
[ ] INDICATES MILLIMETERS

**TOLERANCES**  
FRACTIONAL DIMENSIONS  $\pm \frac{1}{16} / -0$   
SURFACE FINISHES 125V

DESIGNED BY:  
F. SHAD

DRAWN BY:  
M. O'CONNOR

WEIGHT:  
16840 lbmass

APPROVED BY:  
D. SHAD

FILE NAME:  
C:\3D - SERIES DRAWING - PRODUCTION DRAWINGS - MODEL GA\F30-60 MODEL GA.dwg

MATERIAL NOTES:  
1. BURN PER DIMENSIONS SHOWN.  
2. PLATE FLATNESS AFTER BURNING TO BE  
WITHIN ASTM SPECIFICATIONS.  
3. REFER TO API SPEC 2C LATEST EDITION.  
4. WHERE APPLICABLE - ROLL FORM PER  
DIMENSIONS SHOWN.  
5. WHERE APPLICABLE - TACK WELD AS  
REQUIRED TO SECURE ROLLED CAN.

DESIGN STATE:  
APPROVED

MATERIAL:  
N/A



**TECHCRANE INTERNATIONAL, LLC.**  
17639 HARD HAT DRIVE COVINGTON, LA. 70435 U.S.A.  
PHONE (985) 871-0056 FAX (985) 871-0065

**BECHTEL CANADA CO. JOB #12875**  
**F30-60 GENERAL ARRANGEMENT**

DATE:  
3/26/2015

REVISION NO.:  
0

SHEET 2 OF 2

PART/DWG. NO.:  
**PRESENTATION**