

4

3

2

1

D

D

C

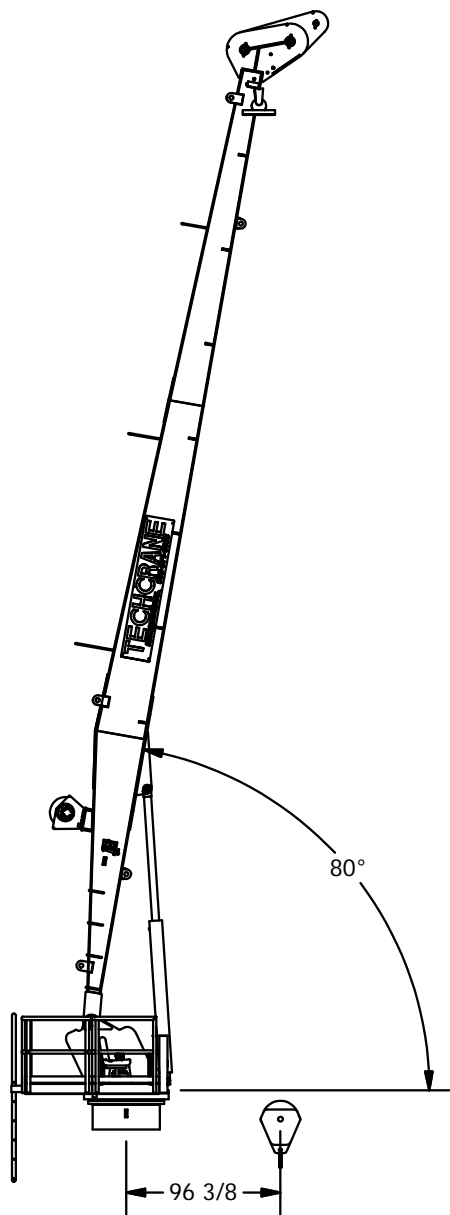
C

B

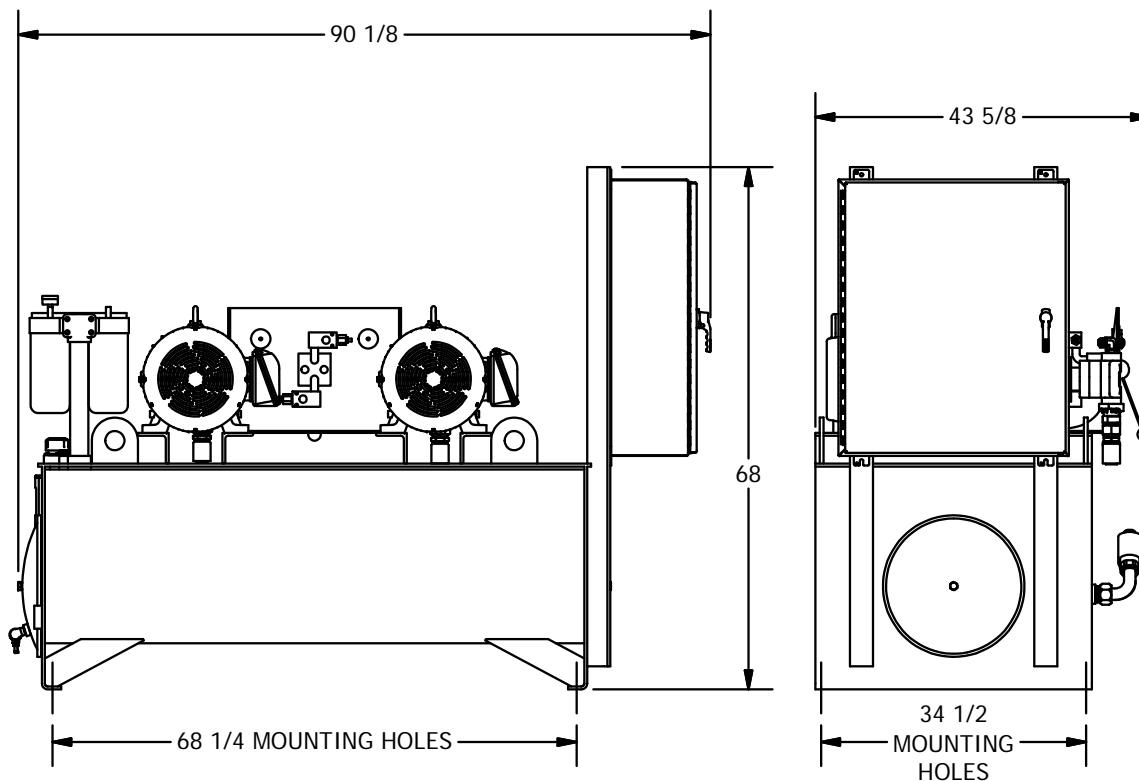
B

A

A



BOOM UP VIEW



HYDRAULIC POWER UNIT

PART/DWG. NO.:

PRESENTATION

INFORMATION CONTAINED HEREON IS
CONFIDENTIAL AND TRADE SECRET
DO NOT DISCLOSE, USE OR REPRODUCE
WITHOUT PRIOR WRITTEN APPROVAL
FROM TECHCRANE INTERNATIONAL LLC.

UNLESS OTHERWISE SPECIFIED
ALL DIMENSIONS ARE IN INCHES
[] INDICATES MILLIMETERS

TOLERANCES

FRACTIONAL DIMENSIONS $\pm \frac{1}{16}$ / -0
SURFACE FINISHES 125V

DESIGNED BY:

F. SHAD

DRAWN BY:

lbaylis

WEIGHT:

APPROX. 18844 lbmass

APPROVED BY:

SEE APPROVAL STAMP

FILE NAME:

C:\WORK\DESIGN\PROJECTS\F30-50 VIGOR\1111-1100\HALL\HALL-F30-50 VIGOR JOB #12895-12898.dwg

MATERIAL NOTES:

1. BURN PER DIMENSIONS SHOWN.
2. PLATE FLATNESS AFTER BURNING TO BE WITHIN ASTM SPECIFICATIONS.
3. REFER TO API SPEC 2C LATEST EDITION.
4. WHERE APPLICABLE - ROLL FORM PER DIMENSIONS SHOWN.
5. WHERE APPLICABLE - TACK WELD AS REQUIRED TO SECURE ROLLED CAN.

DESIGN STATE:

WorkInProgress

MATERIAL:



TECHCRANE INTERNATIONAL, LLC.

17639 HARD HAT DRIVE COVINGTON, LA. 70435 U.S.A.
PHONE (985) 871-0056 FAX (985) 871-0065

F30-50 VIGOR JOB #12895-12898

DATE:

6/2/2016

REVISION NO.:

3.9

CO NO.:

SHEET 2 OF 3

4

3


2

1

A

1. HYDRAULIC LINE SIZES ARE SUGGESTED FOR PLACEMENT OF THE HPU LESS THEN 10 FT. AWAY FROM THE CRANE. THE PLUMBING SIZES MUST BE RECHECKED APPROPRIATELY TO HELP PREVENT BACK PRESSURE.
2. ELECTRICAL WIRING AND/OR INTERCONNECTING HOSES BETWEEN HPU AND/OR CONSOLE AND CRANE (IF APPLICABLE) ARE NOT INCLUDED.
3. OUR PEDESTAL JUNCTION BOX LOCATION WAS INTENDED FOR THE STANDARD PEDESTAL. THIS CUSTOM PEDESTAL DESIGN HAS REQUIRED RELOCATION OF THE JUNCTION BOX, AND IT WILL NOW BE INSTALLED AT THE OPERATOR CONTROL STATION. THE INCOMING POWER (115V/60HZ) WILL BE ROUTED DIRECTLY TO THE SLIP RING INSIDE THE PEDESTAL AT THE JOB SITE BY OTHERS. THE ELECTRICAL DRAWING HAS BEEN ADJUSTED AND ATTACHED.



INFORMATION CONTAINED HEREON IS CONFIDENTIAL AND TRADE SECRET DO NOT DISCLOSE, USE OR REPRODUCE WITHOUT PRIOR WRITTEN APPROVAL FROM TECHCRANE INTERNATIONAL LLC.	DESIGNED BY: <div>F. SHAD</div>	MATERIAL NOTES: 1. BURN PER DIMENSIONS SHOWN. 2. PLATE FLATNESS AFTER BURNING TO BE WITHIN ASTM SPECIFICATIONS. 3. REFER TO API SPEC 2C LATEST EDITION 4. WHERE APPLICABLE - ROLL FORM PER DIMENSIONS SHOWN. 5. WHERE APPLICABLE - TACK WELD AS REQUIRED TO SECURE ROLLED CAN.	<div>TECHCRANE INTERNATIONAL, LLC.</div> <div>17639 HARD HAT DRIVE COVINGTON, LA. 70435 U.S.A. PHONE (985) 871-0056 FAX (985) 871-0065</div>		
	DRAWN BY: <div>lbaylis</div>	WEIGHT: <div>APPROX. 18844 lbmass</div>	DESIGN STATE: <div>WorkInProgress</div>	F30-50 VIGOR JOB #12895-12898	
UNLESS OTHERWISE SPECIFIED ALL DIMENSIONS ARE IN INCHES () INDICATES MILLIMETERS <u>TOLERANCES</u> FRACTIONAL DIMENSIONS $\pm \frac{1}{16}$ / -0 SURFACE FINISHES 125√	APPROVED BY: <div>SEE APPROVAL STAMP</div>	MATERIAL:	DATE: <div>6/2/2016</div>	REVISION NO.: <div>3.9</div>	CO NO.:
	FILE NAME: <div>C:\WORKSPACE\PROJECTS\12895-12898\F30-50 VIGOR\117639 VIGOR JOB #12895-12898.dwg</div>	SHEET 3 OF 3			

PART/DWG. NO.:

PRESENTATION



TECHCRANE INTERNATIONAL, LLC.

17639 HARD HAT DRIVE COVINGTON, LA. 70435 U.S.A.
PHONE (985) 871-0056 FAX (985) 871-0065

F30-50 VIGOR JOB #12895-12898

DATE: 6/2/2016

REVISION NO.:	3.9
---------------	-----

CO NO. :

SHEET 3 OF 3